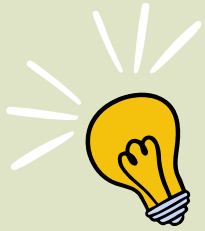


Homework Tracker

ELA / 4th Grade

Week of: 4/27/26



Details

Due Date

Check

Monday
4/27/26



Complete 20 Minutes of iReady

5/3/26

BrainPOP: Folktales

5/1/26

Tuesday
4/28/26



Reread selection, *Thunder Rose* on
HMH to prepare for Selection Quiz
tomorrow.

4/28/26

Wednesday
4/29/26



IXL (QQ.9): Is the Word and Adjective
or an Adverb?

5/1/26

Complete 25 Minutes of iReady

5/3/26

Thursday
4/30/26



Study for Module 7 Week 1 Assessment
tomorrow. Use the anchor charts that
follow to prepare.

4/30/26

No Homework

Friday
5/1/26



RETELL

Retelling a story helps you understand it better.



Think about **WHO**, **WHAT**, **BUT**, and **HOW** to help you retell a story.

WHO
Who is the main character?

WHAT
What does the main character want?

BUT
What problem does the main character face?

HOW
How is the problem resolved at the end?

Tell about

- important characters
- setting
- events in order—beginning, middle, and end
- conflict and resolution

Use sequence words

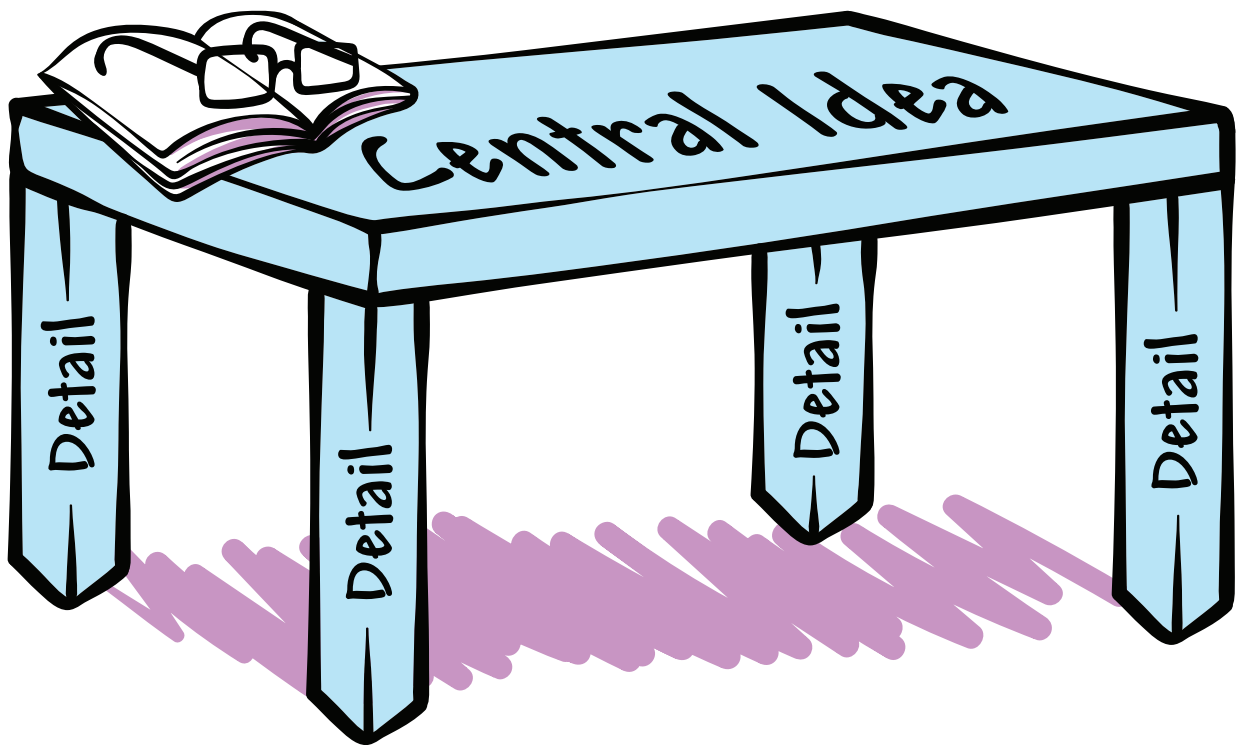
FIRST → NEXT
THEN ←
→ LATER
FINALLY ←

CENTRAL IDEA

The **Central Idea** is what the text is mostly about.

Look for **text clues**.

- Headings
- Visuals
- First or Last Sentence
- Repeated Words



Evaluate **details** to determine **key ideas** that support the central idea.

- Examples
- Facts
- Evidence
- Description

Figurative Language

Figurative Language creates a special effect or feeling or makes a point.

This includes “figures of speech” that compare, exaggerate, or mean something different from what is expected.

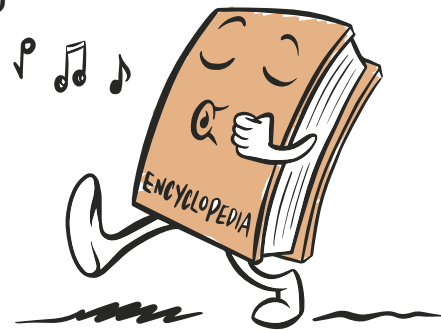
Simile A comparison of two things using “like” or “as”

I'm happy as a clam!



Metaphor A comparison of two things by saying one thing is another thing

You must be a walking encyclopedia to know all those facts.



Personification Gives human qualities or characteristics to an animal or object



The moon follows me when I walk at night.

Alliteration A sound device used to repeat the same consonant sound at the beginning of nearby words



Assonance A sound device used to repeat the same vowel sounds in nearby words



The cat ran past the man.

Sensory Language

Words that appeal to the five senses



The summer breeze smelled like fresh-cut grass.

Idioms, Adages, and Proverbs

Idioms, adages, and proverbs are types of common expressions and sayings that have meanings beyond what can be understood by their individual words.

IDIOM

An expression that means something different from the meaning of its individual words



Who put
a bee in
her bonnet?

ADAGE

A short statement that expresses a general truth or piece of advice

ACTIONS
WORDS

Actions
speak louder
than words.

PROVERB

A short, popular saying, usually of ancient origin, that expresses truth based on common sense or experience



All that
glitters
is not gold.

CHARACTER

Major characters are central to a story. Minor characters support the major characters. Authors bring their characters and subjects to life in five key ways.

Appearance

What does the character look like?

Traits

What qualities or abilities does the character have?

Voice and Dialogue

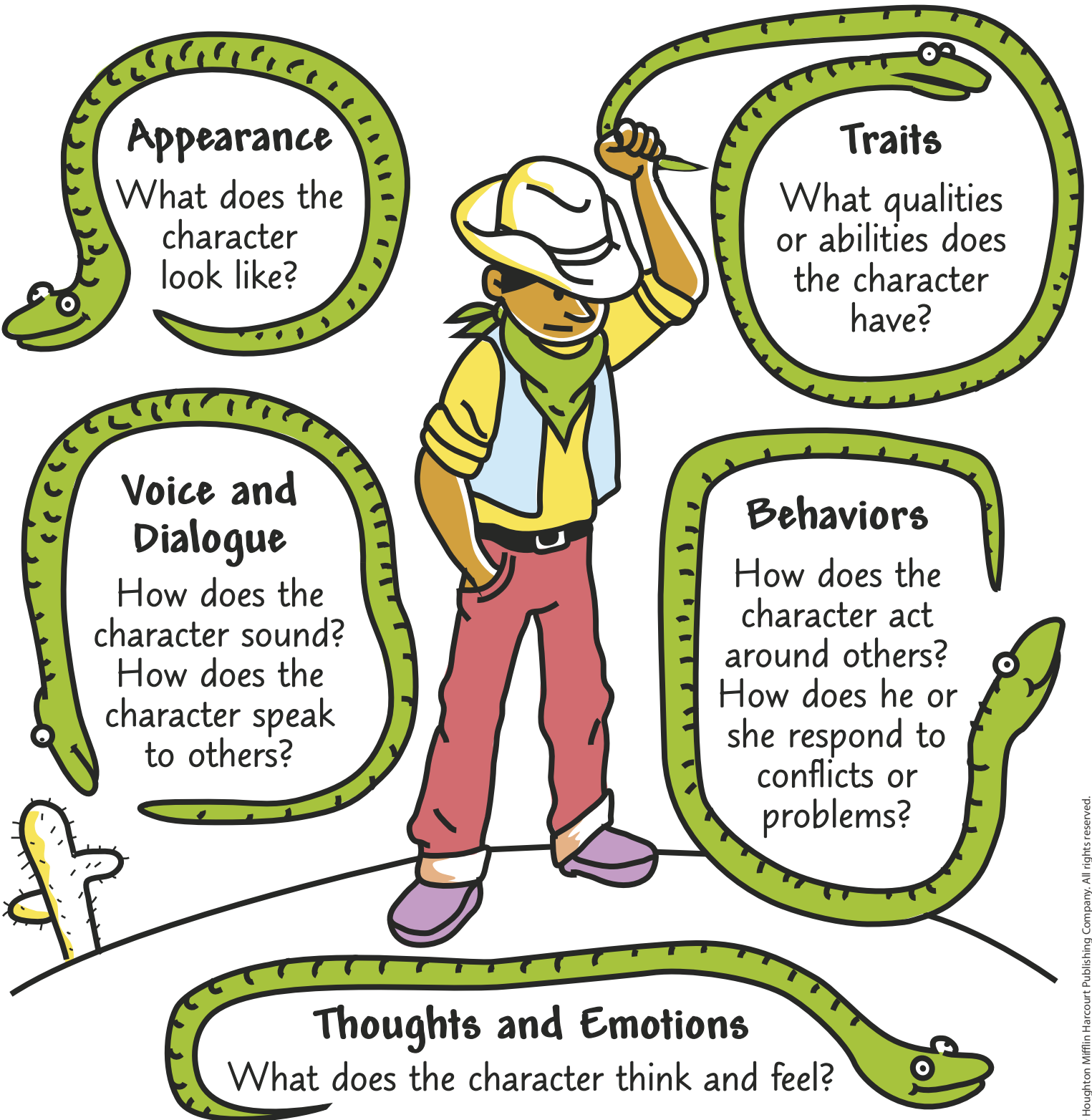
How does the character sound?
How does the character speak to others?

Behaviors

How does the character act around others?
How does he or she respond to conflicts or problems?

Thoughts and Emotions

What does the character think and feel?



Analogies

An analogy is a comparison of two sets of words. Each set of words has a similar relationship. The two sets are connected by the word *as*.

Sometimes the words are synonyms with similar meanings. Sometimes they are antonyms with opposite meanings.

Examples:

- 1 *Happy is to sad as recall is to forget.*
- 2 *Splendor is to beauty as tiny is to little.*
- 3 *Partial is to prefer as happy is to glad.*
- 4 *Old is to new as commendable is to critical.*

Suffix *-ion*

A suffix is a word part added to the end of a base word that changes the meaning of the word. A suffix also changes a word's part of speech. For example, the suffix *-ion* changes the verb *exaggerate* to the noun *exaggeration*.

The suffix *-ion* and the related suffixes *-ation* and *-ition* come from the Latin language. Words with the suffix *-ion* usually tell about a state, action, or result. *Exaggeration* is the "state of exaggerating."

