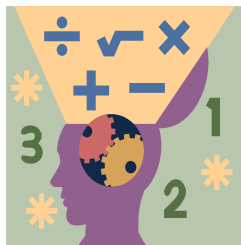


Name: _____ Section: _____



Homework

Greetings, Scholar and Parents! We have finally finished working with our HMH GoMath! Book and are moving onto our new platform, **Big Ideas Math**. Below is your guide on how to access and login to Big Ideas Math, along with a list of which assignments need to be submitted.

HOW TO ACCESS BIG IDEAS

1. Go to <https://bigideasmath.com>
2. Your login information is the following:
 - USERNAME: <YourArchieLogin>@archimedean.org **NO CAPITAL LETTERS.**
 - PASSWORD: Archie199 **THE LETTER A IS CAPITAL.**
 - **YOUR INFORMATION IS CASE-SENSITIVE. PLEASE MAKE SURE YOU FOLLOW THE NOTES ABOVE.**

LATE POLICY ANNOUNCEMENT

PARENTS: See your emails for more information

Late policy is now in effect for the last 9 weeks. Assignments may be submitted up to 3 days late for 10% points per day. After 3 days, the deduction is immediately 50% points off.

Notes

This homework assignments on BigIdeas are due on different days. Please follow these due dates.

Students must prove and show all their work in the provide space. Scholars should use a separate sheet of paper if they need additional space. Failure to show work or packets submitted after the due date will result in a lower grade. If a scholar struggles with a lesson, they can review the daily lesson on HMH. Please feel free to contact me with any questions or concerns at peter.vanegas@archimedean.org.

<u>Monday</u>	April 13 th	Big Ideas – Multiplying Fractions (DUE WEDNESDAY)
<u>Tuesday</u>	April 14 th	Big Ideas – Dividing Fractions (ALSO DUE WEDNESDAY)
<u>Wednesday</u>	April 15 th	Practice Day – No additional work.
<u>Thursday</u>	April 16 th	ALL OPERATIONS TEST – ADD, SUB, MULTIPLY AND DIVIDE DECIMALS AND FRACTIONS!!!
<u>Friday</u>	April 17 th	Big Ideas–Area & Perimeter (Due Sunday)