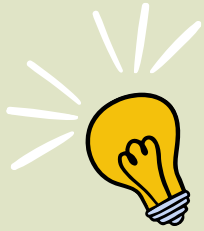


Homework Tracker

ELA / 4th Grade

Week of: 4/6/26



Details

Due Date

Check

Monday
4/6/26



Complete 25 Minutes of iReady

4/12/26

Tuesday
4/7/26



Reread selection, *The Mariana Trench* on HMH to prepare for Selection Quiz tomorrow.

4/7/26

Complete 20 Minutes of iReady

4/12/26

Wednesday
4/8/26



IXL (KK.12): Form the Singular or Plural Possessive

4/10/26

Study for Module 6 Week 1 Assessment tomorrow. Use the anchor charts that follow to prepare.

4/9/26

Thursday
4/9/26



No Homework

Friday
4/10/26



TEXT FEATURES

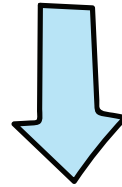
Kinds of Type
show emphasis
or indicate a title.

Boldface

italic

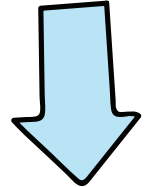
CAPITAL LETTERS

HEADINGS



name the
topic
of each
section
of text.

Subheadings

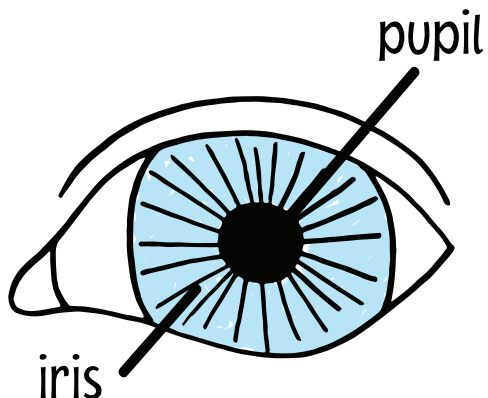


break
down the
topic into
subtopics.

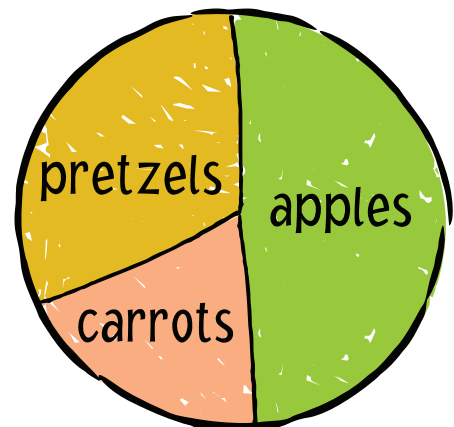
GRAPHIC FEATURES

Visuals such as diagrams, graphs, maps, charts, or illustrations help explain ideas in the text.

Diagrams are pictures
with labels.



Charts organize
information.



Summarize

1

Find **HEADINGS**
and subheadings.

2

Find
MAIN IDEAS.

Remove
unnecessary
information.

Remove repeated
information.

Replace lists with
general wording.

3

WRITE
short topic
sentences.

4

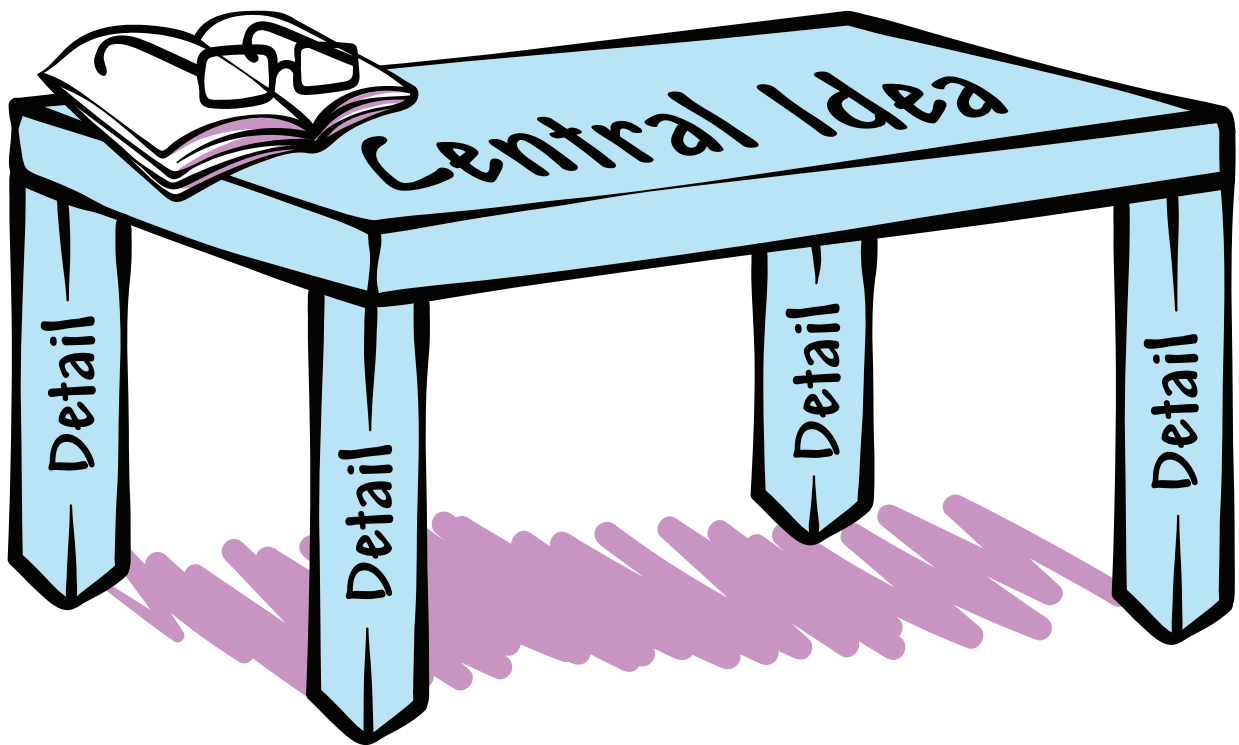
COMBINE topic
sentences into a
short summary.

CENTRAL IDEA

The **Central Idea** is what the text is mostly about.

Look for **text clues**.

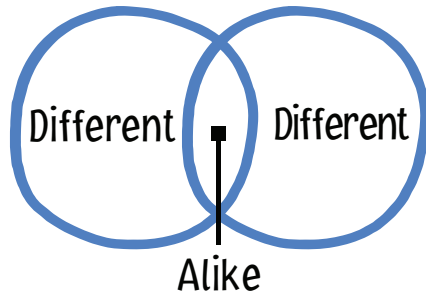
- Headings
- Visuals
- First or Last Sentence
- Repeated Words



Evaluate **details** to determine **key ideas** that support the central idea.

- Examples
- Facts
- Evidence
- Description

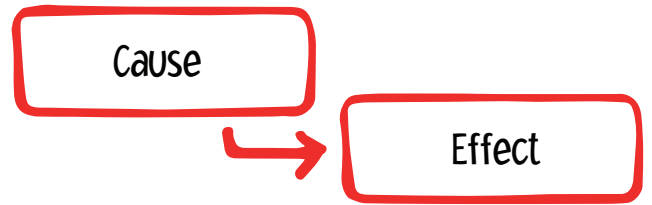
Comparison/ Contrast



Purpose: to describe how things are alike and different

Transition Words: *but, both, however, and*

Cause/Effect

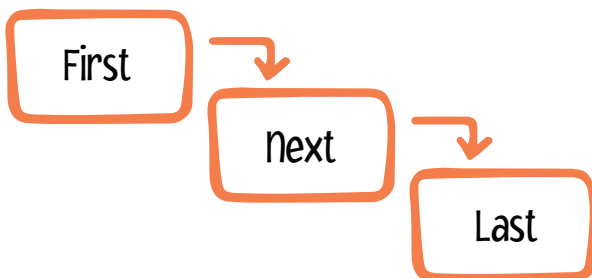


Purpose: to explain what happened and why it happened

Transition Words: *because, so, in order to, as a result*

TEXT STRUCTURE

Sequence



Purpose: to explain events in order

Transition Words: *before, first, next, then, last, after*

Problem/Solution



Purpose: to show a problem and how it is solved

Transition Words: *problem, solution, difficulty, the answer is*

Reference Source

A **reference source** is a source that gives general background information such as dates, facts, or definitions.

A **dictionary** is a reference source that can be used to determine the meaning, part of speech, syllabication, and pronunciation of an unknown word.

Examples:

1 **autonomous**

adj. au·ton·o·mous

(ô-**tŏn'**·ə·məs)

- something that has the power to control itself

2 **glimpse**

v. glimpse (glĭmps)

- to get a brief look

3 **summit**

n. sum·mit (**sŭm'**·ĭt)

- the highest point or peak

Greek Roots *auto*, *bio*, *photo*, *graph*

A **root** is a basic word part that cannot stand alone as a word. Many English words contain roots that come from Greek or Latin. Knowing the meaning of Greek and Latin roots can help you understand the meanings of unknown words.

Greek Root	Meaning	Example
<i>auto</i>	self	auto nomous: something that controls itself
<i>bio</i>	life	bio luminescent: the production of light by living things
<i>photo</i>	light	photo graph: an image produced by using light on a sensitive surface, such as film
<i>graph</i>	write	ocean o grapher: a person who studies, or “writes about,” the ocean