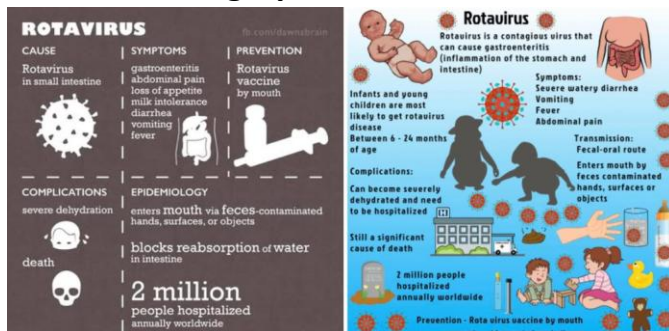


Human Diseases – Project

Due date: Tuesday 3/02 @23:59

Requirements:

- Pick one of the groups on the slide ch. 24
 - Define the diseases
 - Define the symptoms
 - Define the treatments if any
 - Define the way it spreads
 - Which group of human population is mostly affected, why?
- **Create an Infographic** – research what the correct format



Period 1 Groups:

Group 1 - Rotavirus+seasonal flu (Svine flu)

Group 2 - Measles+Mumps+Rubella

Group 3 - Pneumonia+Meningococcal Meningitis

Group 4 - Diphtheria+Tetanus+Pertussis

Group 5 - Polio+seasonal Flu (SARS), COVID-19

Period 4 Groups:

Group 1 - Rotavirus+seasonal flu (Svine flu)

Group 2 - Meningococcal Meningitis + seasonal flu (SARS)

Group 3 - Polio+seasonal Flu (Bird flu)

Group 4 - Measles+Mumps+Rubella

Group 5 - Diphtheria+Tetanus+Pertussis

Group 6 - Pneumonia+seasonal flu (MERS), COVID-19