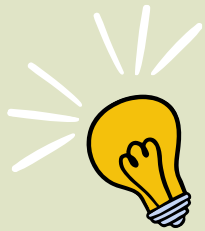


Homework Tracker

ELA / 4th Grade

Week of: 2/23/26



Details

Due Date

Check

Monday
2/23/26



20 Minutes of iReady

3/1/26

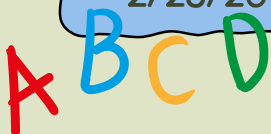
Tuesday
2/24/26



Study for Module 5 Week 1
Assessment tomorrow. Use Anchor
Charts that follow to Prepare.

2/24/26

Wednesday
2/25/26



BrainPOP: Black History Month

2/27/26

Thursday
2/26/26



25 Minutes of iReady

3/1/26

Friday
2/27/26



No Homework

ASK AND ANSWER

QUESTIONS

Asking and answering questions before, during, and after reading helps you

- make predictions.
- clarify things that might seem unclear.
- think more deeply about the text.

When is this happening?

Who is this person?

What will this be about?

Where in the text can I find an answer to my question?

Why did the author write this?

Ideas and Support

When authors share ideas, can you tell which are facts and which are opinions?

Fact

A fact can be proven true.

Look for numbers,
photos, maps,
or eyewitness reports.



Opinion

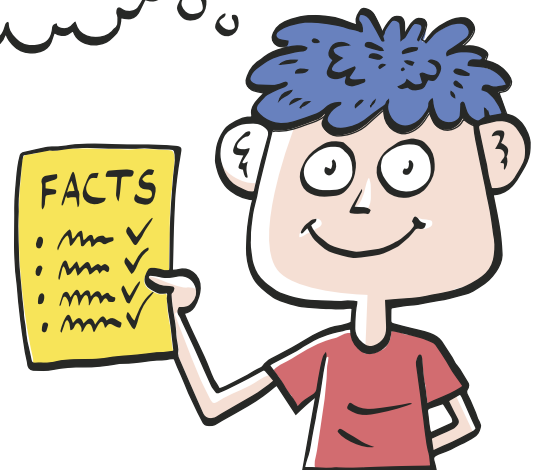
An opinion is a personal belief and cannot be proven true.

Look for *I believe*,
I think, *best*,
seems to be, *never*,
always, or *probably*.

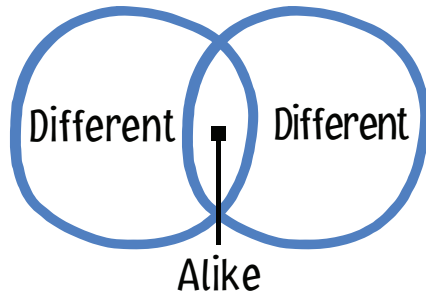
Readers decide if the author is stating a **FACT** or **OPINION**.

An author may be trying to influence your thinking.

It's true because...



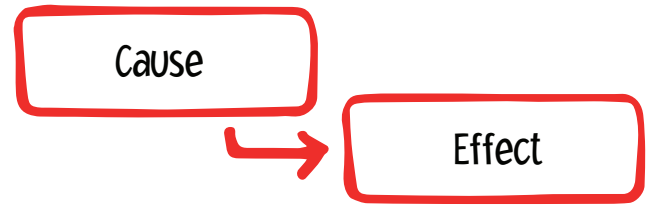
Comparison/ Contrast



Purpose: to describe how things are alike and different

Transition Words: *but, both, however, and*

Cause/Effect

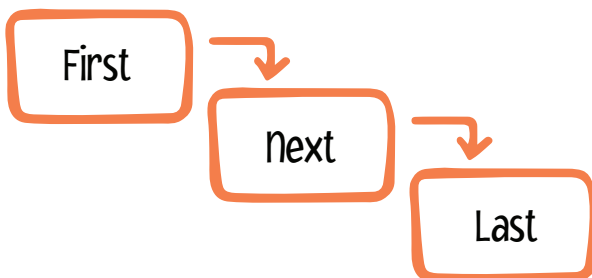


Purpose: to explain what happened and why it happened

Transition Words: *because, so, in order to, as a result*

TEXT STRUCTURE

Sequence



Purpose: to explain events in order

Transition Words: *before, first, next, then, last, after*

Problem/Solution



Purpose: to show a problem and how it is solved

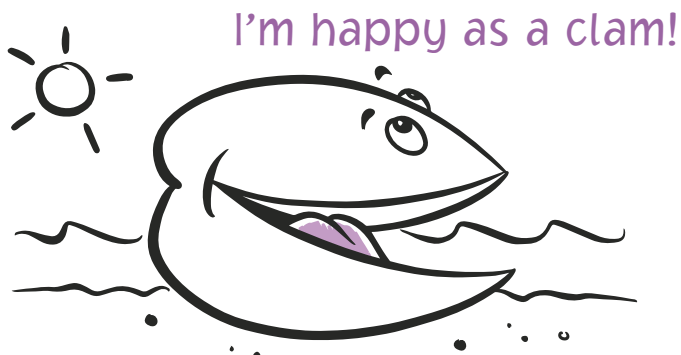
Transition Words: *problem, solution, difficulty, the answer is*

Figurative Language

Figurative Language creates a special effect or feeling or makes a point.

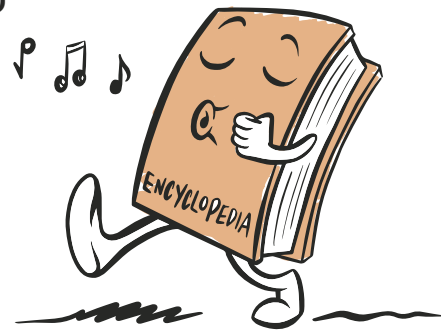
This includes “figures of speech” that compare, exaggerate, or mean something different from what is expected.

Simile A comparison of two things using “like” or “as”



Metaphor A comparison of two things by saying one thing is another thing

You must be a walking encyclopedia to know all those facts.



Personification Gives human qualities or characteristics to an animal or object



Alliteration A sound device used to repeat the same consonant sound at the beginning of nearby words



Assonance A sound device used to repeat the same vowel sounds in nearby words



Sensory Language

Words that appeal to the five senses



Shades of Meaning

Two words with the same or almost the same meaning are called **synonyms**. Synonyms can have differences in meaning. These are called **shades of meaning**.

For example, the words *valuable* and *prized* are synonyms with different shades of meaning.

Some words create negative or positive feelings. This is a word's **connotation**. The words *fair* and *beautiful* have similar meanings, but *beautiful* has a more positive connotation. The words *mad* and *furious* have similar meanings, but *furious* has a stronger, more negative connotation.

Examples:

- 1 My new puppy is large already.
- 2 My new puppy is enormous already.

- 3 I thought the conversation was laughable.
- 4 I thought the conversation was funny.
- 5 I'm going for a walk after lunch.
- 6 I'm going for a stroll after lunch.

Suffixes *-ity*, *-ty*

A **suffix** is a word part added to the end of a base word that changes the meaning of the word. A suffix also changes the word's part of speech. For instance, when you add the suffix *-ity* to the adjective *popular*, you get the noun *popularity*.

- If you want to run for class president, it helps to be **popular**.
- The book's **popularity** made me want to read it even more.

<i>-ity</i>	<i>-ty</i>
security	safety
rarity	certainty
finality	subtlety