

Name: \_\_\_\_\_

Section: \_\_\_\_\_

# First Grade

## American Math Homework #17



This week in class, we will learn **Chapter 7: Subtraction Strategies**. We will work on finding unknown numbers in addition and subtraction equations, subtracting tens and ones with no regrouping, working on true and false for subtraction equations, and we will practice with fact families.

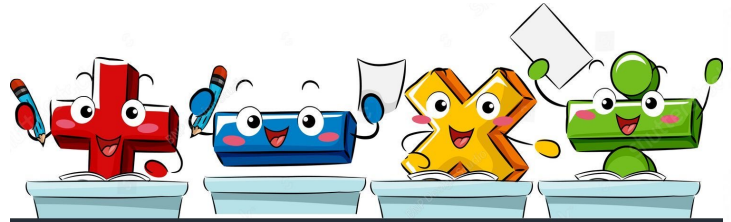
There will be a test on **Thursday, January 15th**. To review for the test, scholars can use this week's and last week's homework, Cinemath, and the IXL lessons below, as well as additional resources posted on Archie.

Scholars have access to the IXL math platform for additional practice and reinforcement of the daily lesson. There is no limit to how many times scholars can review the lessons. Below, please find practice modules scholars can complete from home to develop a deeper understanding of the daily lesson.

- S.2    - S.7    - U.1    - X.11    - Y.5    - Z.6    - X.7
- S.4    - S.8    - U.2    - X.13    - Z.3    - X.3.    - Y.5
- S.6    - T.10    - U.3    - Y.3    - Z.4    - X.5.    - CC.4

### Vocabulary

1. Count Back
2. Difference
3. Minus
4. Subtract
5. Take Away
6. How many more



### Notes

Students **MUST** prove and show all their work. If additional space is needed, please feel free to attach lined paper to the homework packet. **Failure to show your work will result in a lower grade.** Please complete the homework to the best of your abilities.

Monday January 12<sup>th</sup> – Page 453 and 454.

\_\_\_\_\_

Tuesday January 13<sup>th</sup> – Page 455

\_\_\_\_\_

Wednesday January 14<sup>th</sup> – Page 456

\_\_\_\_\_

Thursday January 15<sup>th</sup> – Subtraction Maze

\_\_\_\_\_

Friday January 16<sup>th</sup> – No Homework

\_\_\_\_\_

Name \_\_\_\_\_

# Chapter Review

1. Add or subtract.

$16 - 7 = \underline{\quad}$

$30 - 10 = \underline{\quad}$

$78 - 47 = \underline{\quad}$

$17 - \underline{\quad} = 7$

2. Which fact is a related fact?

$5 + 3 = 8$

$8 - 5 = 3$

$3 + 5 = 8$

?

$8 - 3 = 5$

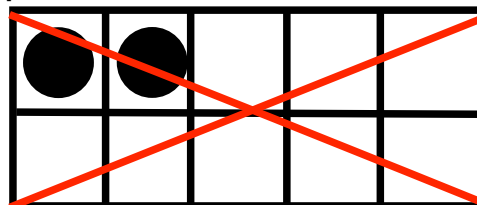
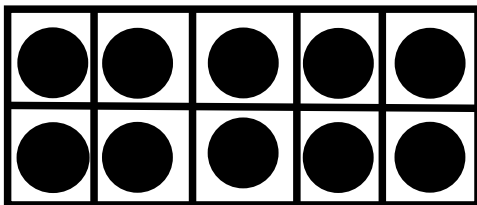
$8 + 5 = 13$

$8 + 3 = 11$

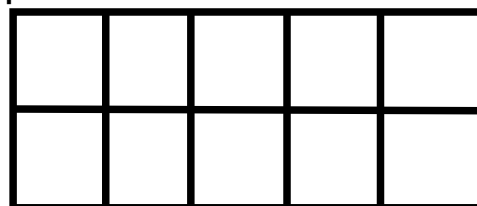
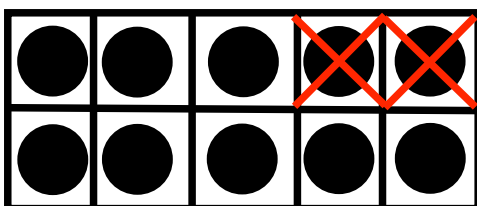
$5 - 3 = 2$

3. Ally uses the model to show  $12 - 4$ .

Step 1



Step 2





Which number make each equation about the model true?

$12 - \underline{\quad} = 10$

$10 - \underline{\quad} = 8$

4. Daniel has 7 blue cars. He has some red cars. Daniel has 16 cars in all. How many red cars does Daniel have?

Daniel has \_\_\_\_\_ red cars.

- 
5. Use   to find the unknown numbers. Write the numbers.



$16 - 6 = \underline{\quad}$

- 
6. Which is the unknown number in these related facts?

$\square + 4 = 13$

$13 - 4 = \square$

$4 + \square = 13$

$13 - \square = 4$

5

7

8

9

Name \_\_\_\_\_

7. Which are related facts? Write each equation into the correct box to show the related fact. You will use all of the equations.

$$13-5=8$$

$$14-11=3$$

$$8+5=13$$

$$11+3=14$$

$$14-3=11$$

$$13-8=5$$

- 
8. Find the difference:

$$40-20= \underline{\quad}$$

$$82-31= \underline{\quad}$$

$$97-64= \underline{\quad}$$

- 
9. Is the equation true?  
Choose Yes or No.

$$7 + 2 = 9 - 2$$

Yes

No

$$9 = 6 + 3$$

Yes

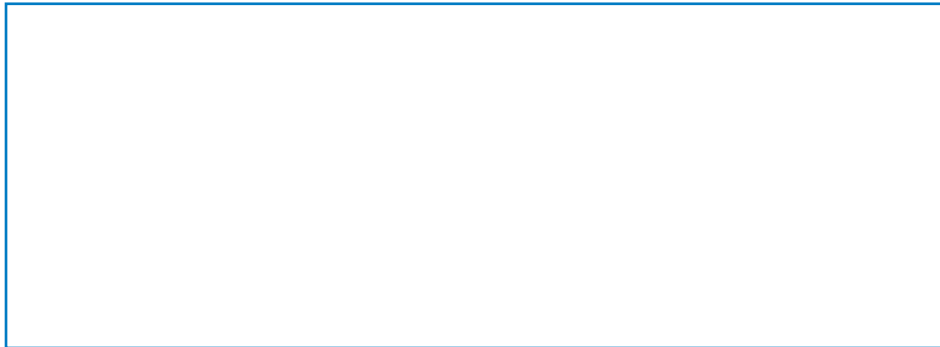
No

$$5 + 4 = 4 + 5$$

Yes

No

10. Leslie has 14 white socks. Aziz has 6 white socks. How many more white socks does Leslie have than Aziz? Solve. Write or draw to show your work.



\_\_\_\_\_ more white socks

- 
11. Lisa has 36 balloons. 12 of them pop. How many balloons does Lisa have left?

Lisa has \_\_\_\_\_ balloons left.


- 
12. Angie has 80 seashells. She gives 30 sea shells to her sister. How many seashells does Angie have now?

Angie has \_\_\_\_\_ seashells.

Name: \_\_\_\_\_

## Subtraction Maze

Shade the boxes that have a correct number sentence to find your way to the friendly pumpkin in the middle. The first few have been done for you.

$2 - 1 = 1$	$19 - 2 = 15$	$5 - 5 = 1$	$12 - 8 = 6$	$7 - 7 = 1$	$16 - 10 = 2$
$20 - 1 = 19$	$11 - 8 = 3$	$18 - 8 = 9$	$15 - 5 = 11$	$14 - 7 = 6$	$6 - 6 = 2$
$14 - 2 = 5$	$8 - 6 = 2$	$6 - 4 = 3$	$13 - 8 = 5$	$5 - 5 = 0$	$14 - 3 = 11$
$10 - 4 = 6$	$14 - 8 = 6$	$15 - 3 = 9$	$12 - 1 = 11$	$8 - 7 = 2$	$20 - 14 = 6$
$13 - 11 = 2$	$15 - 14 = 2$			$16 - 5 = 8$	$6 - 5 = 1$
$19 - 2 = 17$	$2 - 0 = 1$			$18 - 12 = 8$	$15 - 5 = 1$
$9 - 3 = 6$	$17 - 13 = 8$			$7 - 6 = 2$	$19 - 14 = 5$
$16 - 7 = 9$	$9 - 6 = 4$	$16 - 8 = 9$	$20 - 4 = 17$	$12 - 6 = 5$	$4 - 3 = 1$
$7 - 2 = 5$	$18 - 5 = 13$	$16 - 9 = 7$	$20 - 15 = 3$	$11 - 9 = 4$	$16 - 12 = 4$
$13 - 8 = 1$	$19 - 17 = 4$	$3 - 3 = 0$	$8 - 3 = 5$	$17 - 10 = 7$	$14 - 12 = 2$
$7 - 7 = 1$	$16 - 9 = 2$	$17 - 7 = 9$	$18 - 17 = 2$	$17 - 1 = 9$	$10 - 8 = 5$