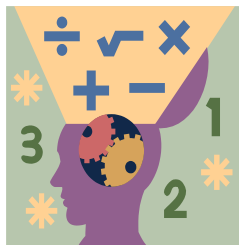


Name: _____ Section: _____



Homework

Greetings, Scholar and Parents! This week, we start **Chapter 12 – Expressions**. Expressions are mathematical statements that involve terms and/or operations. Up to now, students have worked with small expressions that may involve one or two terms, but in the 5th grade and further, they may see many, many more in one problem. Understanding the properties of expressions and the order – PEMDAS!!! – is key.

Extra Practice

Additional practice for the daily lessons is available on IXL. To access extra practice, please have your child login into IXL and see **“From Your Teacher”** section. These are recommended for reinforcement.

- [Add using properties](#)
- [Multiply using properties](#)
- [Write numerical expressions for word problems](#)
- [Evaluate numerical expressions with and without parentheses](#)
- [Evaluate numerical expressions involving decimals](#)
- [Evaluate numerical expressions with parentheses and brackets](#)
- [Identify mistakes involving the order of operations](#)

Notes

This homework assignment is due on Sunday, November 23rd. Students must prove and show all their work in the provide space. Scholars should use a separate sheet of paper if they need additional space. Failure to show work or packets submitted after the due date will result in a lower grade. If a scholar struggles with a lesson, they can review the daily lesson on HMH. Please feel free to contact me with any questions or concerns at peter.vanegas@archimedean.org.

<u>Monday</u>	November 17 th	12.3
<u>Tuesday</u>	November 18 th	12.4
<u>Wednesday</u>	November 19 th	Expressions Mini-Quiz
<u>Thursday</u>	November 20 th	No additional work.
<u>Friday</u>	November 21 st	No additional work. Enjoy your break!

Evaluate Numerical Expressions

Go Online

Interactive Examples

Evaluate the numerical expression.

1. $24 \times 5 - 41$
 $120 - 41$

79

2. $(32 - 20) \div 4$

3. $16 \div (2 + 6)$

4. $27 + 36 \times \frac{1}{12}$

Rewrite the expression with parentheses to equal the given value.

5. $3 \times 4 - 1 + 2$

value: 11

6. $2 \times 6 \div 2 + 1$

value: 4

7. $5 + 3 \times 2 - 6$

value: 10

Problem Solving

8. Chase has several pitchers to hold lemonade for the school bake sale. Two pitchers can hold 64 ounces each, and four pitchers can hold 48 ounces each. How many total ounces can Chase's pitchers hold?
9. At the bake sale, Jonah sold 4 cakes for \$8.25 each and 36 muffins for \$2.50 each. What was the total amount, in dollars, that Jonah received from these sales?

Lesson Check

11. What is the value of the expression
 $4 \times (4 - 2) + 2.2$?

12. Lannie ordered 12 copies of the same book for his book club members. The books cost \$19 each, and the order has a \$15 shipping charge. What is the total cost of Lannie's order?

Evaluate Expressions with Grouping Symbols

Go Online

Interactive Examples

Evaluate the numerical expression.

1. $5 \times (11 - 3 - 4)$

$5 \times (8 - 4)$

5×4

20

2. $30 - (9 \times 2 - 3 \times 4)$

3. $(25 - 11 + 15 - 9) \div 5$

4. $8 \times (1.1 \times 2 - 0.4 \times 0.4)$

5. $(5 \times 2 + 30 - 5) \div 5$

Problem Solving

Use the information at the right for 6 and 7.

6. Write an expression to represent the total number of muffins and bagels Reza sells in 5 days.

7. Evaluate the expression to find the total number of muffins and bagels Reza sells in 5 days.

Reza has a cafe. Each day, he bakes 24 muffins. He gives away 3 and sells the rest. Each day, he also bakes 36 bagels. He gives away 4 and sells the rest.

Lesson Check

9. What is the value of the expression?

$$30 + (6 \div 3 + 3 + 4)$$

10. Find the value of the following expression.

$$\left(\frac{5}{6} - \frac{3}{6}\right) \times 6 \div 2$$
