

Monday

- Make sure Moon Journal is complete (due tuesday)
- IXL:
Mean
Median
Mode
 - Can use calculators
 - This should have been completed already (time was given in science & math)

Tuesday

- LMS EduSmart:
The Importance of Organs
Dr. Fix It

Wednesday

- Page 1 & 2
Review the diagram. Identify the organ to which each labeled part belongs. Then describe its function. Can be researched to gather information.

Thursday

- Science Fair:
Create Powerpoint (Google Slides)

**NO HOMEWORK FRIDAY!!
ENJOY YOUR WEEKEND :)**

Reminders

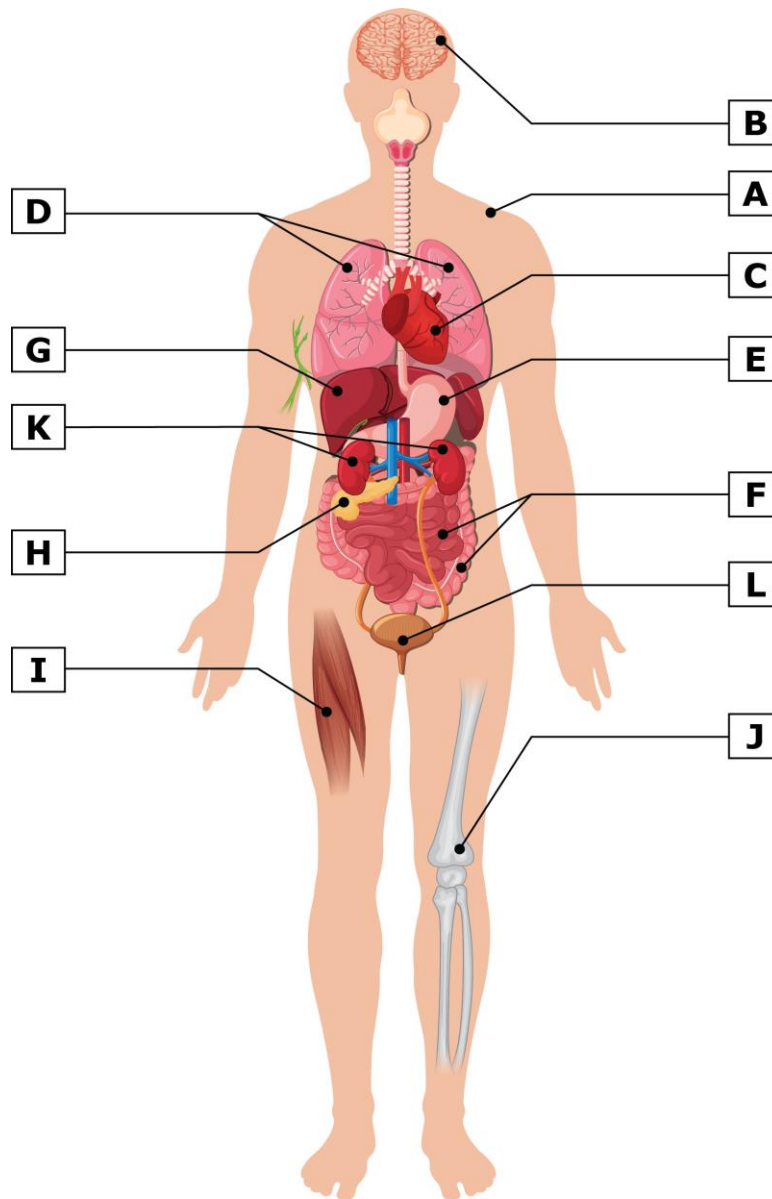
- Powerpoint due 11/17
- Moon Journal Due 11/4
 - Can't see the moon? Use this website:
 - Moon Phase Tonight for Miami, Florida
- Life Science Test (tentative, 12/19) depends on the class schedule. Different sections may have different test days depending on class pace.
- EXTRA CREDIT: tbd
- Extra Credit (review test) for Weather & Climate Test will be added this week

Life Science Unit Vocab (pending)

Human Body Organs Student Activity

Instructions

The human body is a complex system that consists of several organs and organ systems working together. The module *Human Body Systems* discussed these systems and their functions. Review the diagram below. Identify the body system to which each labeled part belongs. Then complete the chart that follows.



Human Body Organs and Their Functions

	Body Organ	Function
A		
B		
C		
D		
E		
F		
G		
H		
I		
J		
K		
L		