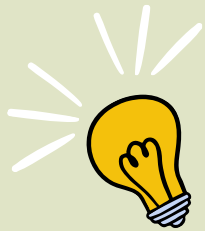


# Homework Tracker

## 4th Grade

### Week of: 10/20/25



Details

Due Date

Check

No School: Teacher Planning Day

Monday  
10/20/25



IXL MW8: Select and Use Text Features

10/24/25

Tuesday  
10/21/25



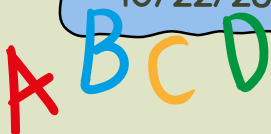
Study for Module 2 Week 1 Assessment tomorrow. Use anchor charts on the following pages to prepare.

10/21/25

45 Minutes of iReady

10/26/25

Wednesday  
10/22/25



IXL L8K: Identify Common and Proper Nouns

10/24/25

BrainPOP: Text Structures

10/24/25

Thursday  
10/23/25



Study for Grammar Quiz: Proper Nouns tomorrow. Use notes in journal to prepare.

10/23/25

No Homework

Friday  
10/24/25

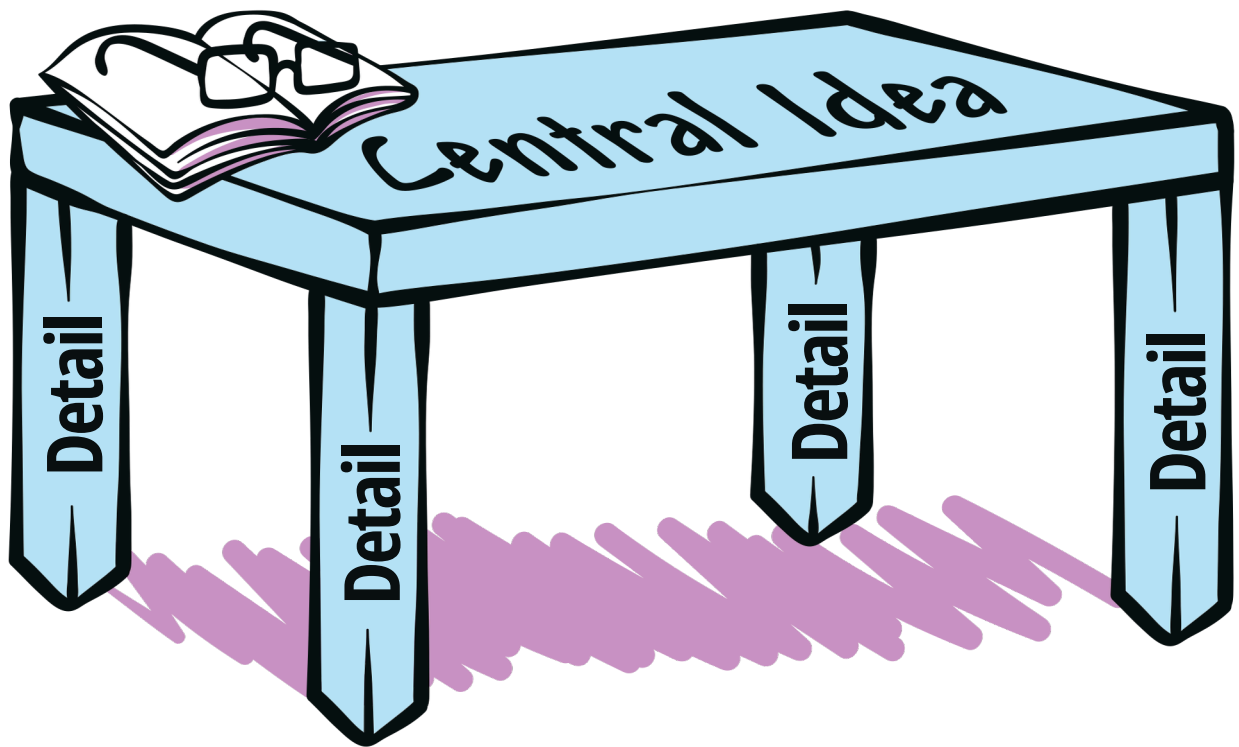


# CENTRAL IDEA

The **Central Idea** is what the text is mostly about.

Look for **text clues**.

- Headings
- Visuals
- First or Last Sentence
- Repeated Words



Evaluate **details** to determine **key ideas** that support the central idea.

- Examples
- Facts
- Evidence
- Description

# Summarize

1

Find  
**HEADINGS** and  
subheadings.

2

Find  
**MAIN IDEAS.**

Remove  
unnecessary  
information.

Remove repeated  
information.

Replace lists with  
general wording.

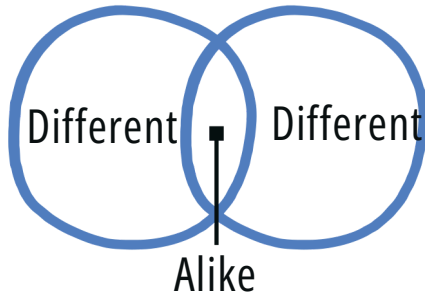
3

**WRITE**  
short topic  
sentences.

4

**COMBINE** topic  
sentences into  
a short  
summary.

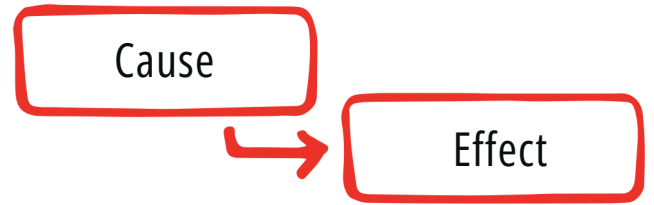
# Comparison/Contrast



**Purpose:** to describe how things are alike and different

**Transition Words:** *but, both, however, and*

# Cause/Effect

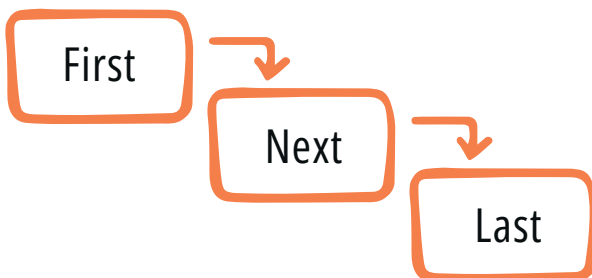


**Purpose:** to explain what happened and why it happened

**Transition Words:** *because, so, in order to, as a result*

# TEXT STRUCTURE

## Sequence



**Purpose:** to explain events in order

**Transition Words:**

*before, first, next, then, last, after*

## Problem/Solution



**Purpose:** to show a problem and how it is solved

**Transition Words:**

*problem, solution, difficulty, the answer is*

# TEXT FEATURES

## Kinds of Type

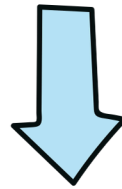
show emphasis  
or indicate a title.

**Boldface**

*italic*

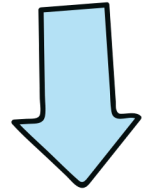
**CAPITAL LETTERS**

## HEADINGS



name the  
topic  
of each  
section  
of text.

## Subheadings

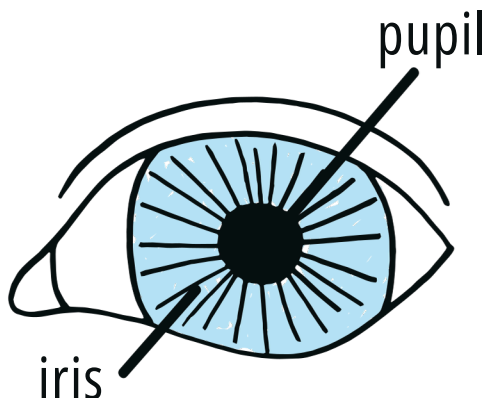


break  
down the  
topic into  
subtopics.

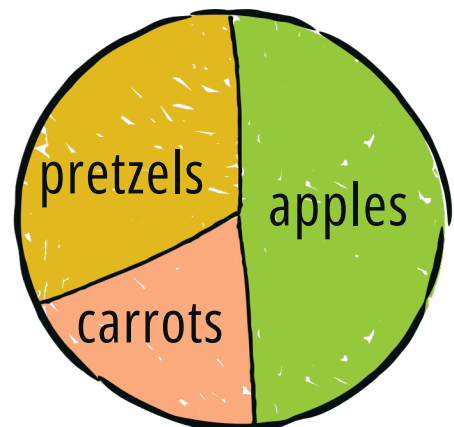
# GRAPHIC FEATURES

Visuals such as diagrams, graphs, maps, charts, or illustrations help explain ideas in the text.

**Diagrams** are pictures  
with labels.



organize  
information.



# Content-Area Words

Content-area words are specific to an area of study.

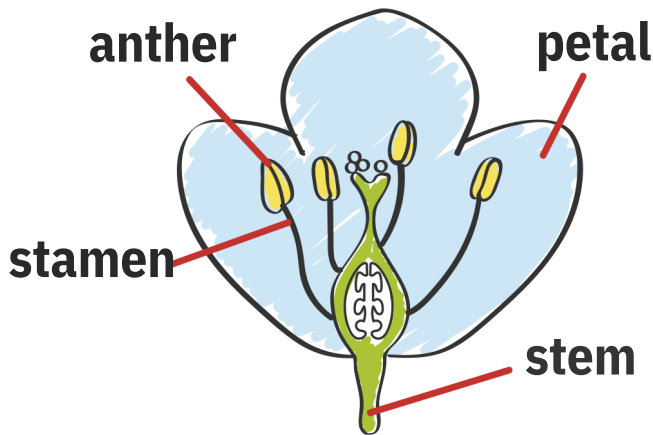
science

math

social studies

Content-area words are often in **boldface**.

They might appear in visuals such as diagrams.



The parts of a flower include **petal**, **stem**, **stamen**, and **anther**.

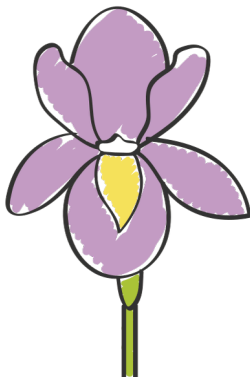
$$\frac{3}{8} + \frac{5}{8}$$

Some **fractions** have common **denominators**.

The world has imaginary lines of **latitude** and **longitude**.



Sometimes there are different uses of a common word.



iris



pupil

