

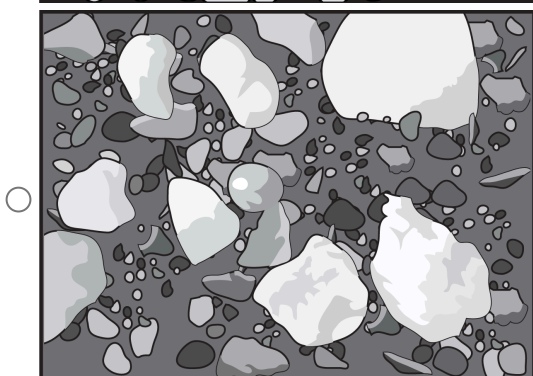
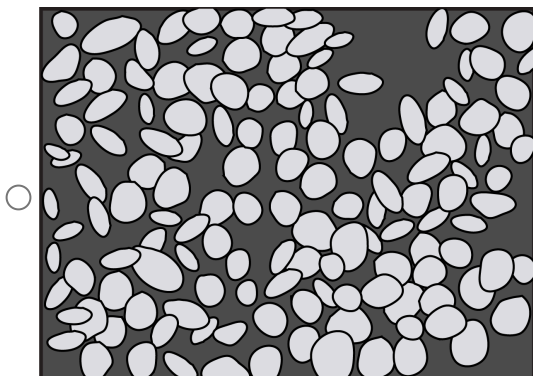
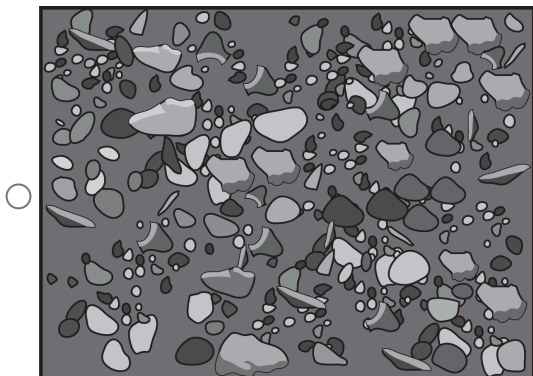
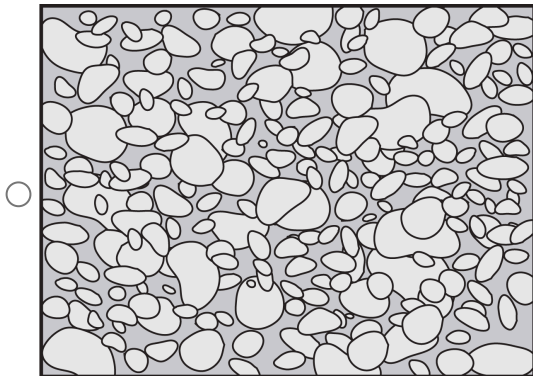
Ch. 3 Lesson 2 Review

1) Which typically is **NOT** a depositional environment? FSAS SC.6.E.6.1

- delta
- mountain peak
- ocean floor
- swamp

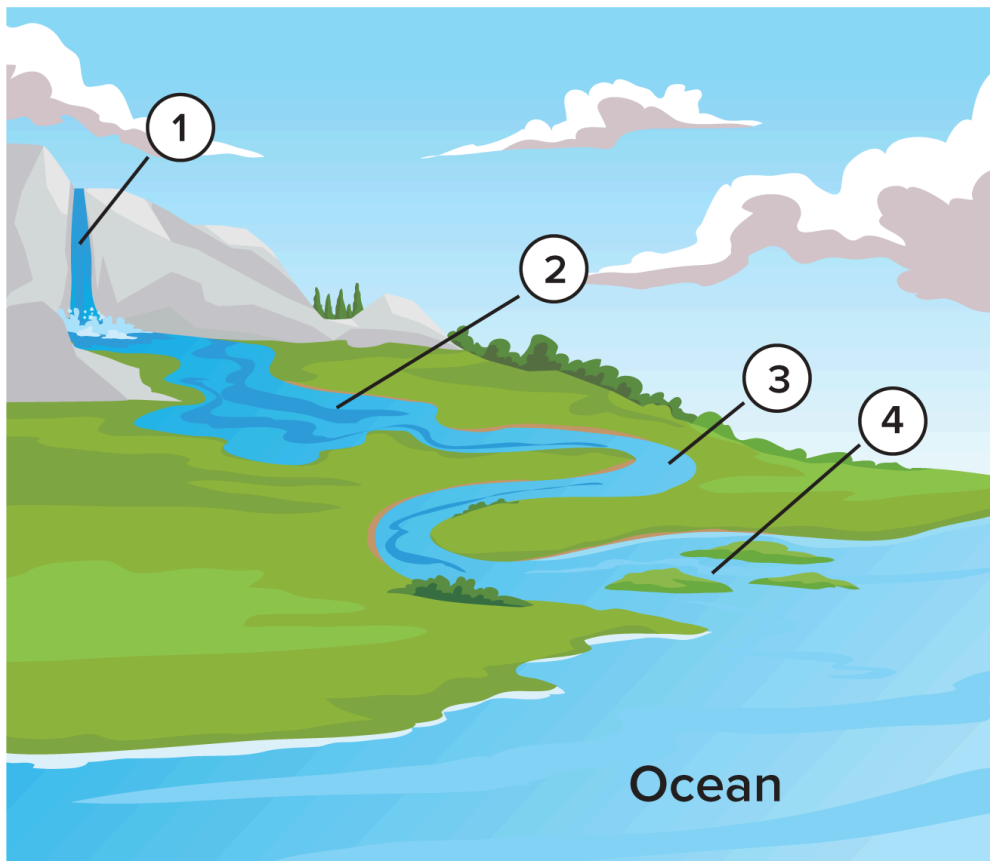
Ch. 3 Lesson 2 Review

2) Which of the sediments shown below were most likely deposited by a glacier? FSAS SC.6.E.6.1



Ch. 3 Lesson 2 Review

- 3) Water moving sediment down slopes and a glacier forming a U-shaped valley as it moves past mountains are examples of FSAS SC.6.E.6.1
- weathering
 - erosion
 - deposition
 - rounding
- 4) Weathering produces sediment. The processes of erosion and deposition move the sediment to new locations. This is done by wind or moving water. The sediment also becomes more rounded and better sorted by size as it travels along. The figure below shows 4 locations in which erosion or deposition is occurring.

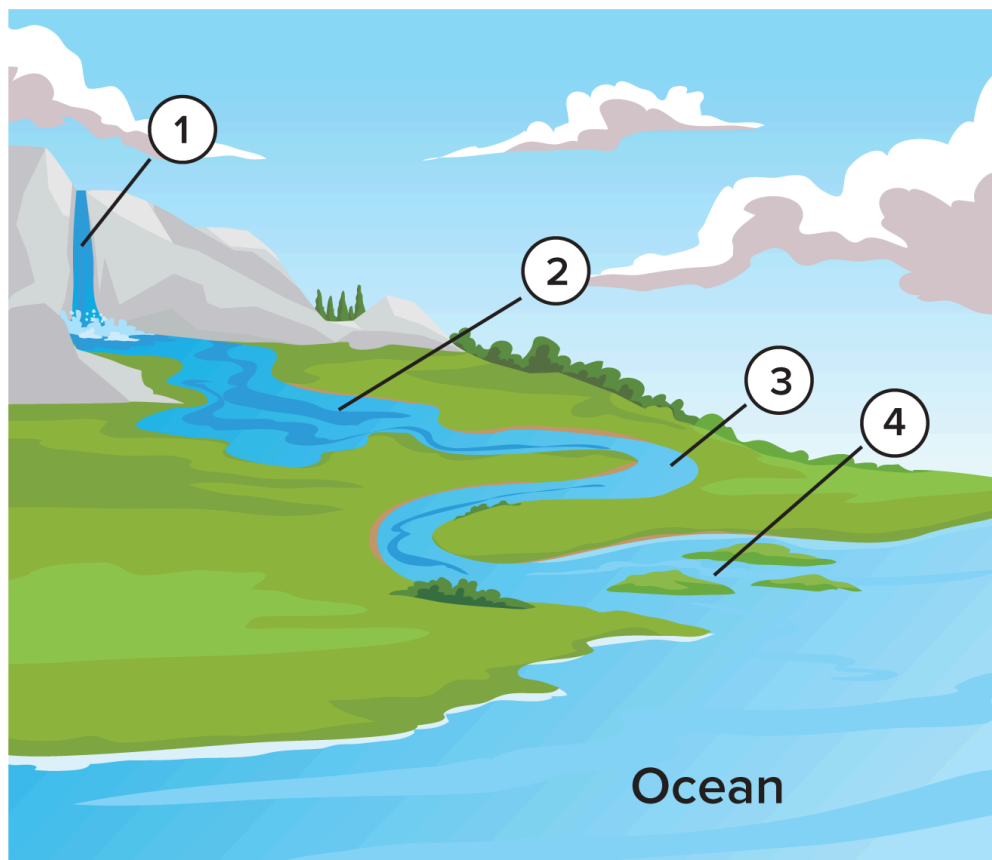


What type of landform has formed at Location 4?

- delta
- butte
- hoodoo
- alluvial fan

Ch. 3 Lesson 2 Review

- 5) Weathering produces sediment. The processes of erosion and deposition move the sediment to new locations. This is done by wind or moving water. The sediment also becomes more rounded and better sorted by size as it travels along. The figure below shows 4 locations in which erosion or deposition is occurring.



Suppose the source of the rocks and sediment is the mountain range near Location 1. At which location is the sediment least rounded and sorted?

- 1
 2
 3
 4