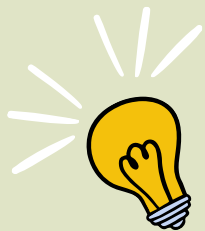


# Homework Tracker

## 4th Grade

### Week of: 10/6/25



Details

Due Date

Check

Monday  
10/6/25



25 Minutes of iReady

10/12/25

BrainPOP: Sentence Fragments

10/9/25

Tuesday  
10/7/25



20 Minutes of iReady

10/12/25

Reread, *Kitoto the Mighty* on HMH to prepare for selection quiz tomorrow.

10/6/25

Wednesday  
10/8/25



Study for Module 1 Week 3 Assessment tomorrow. Use anchor chart on the following pages to prepare.

10/8/25

Thursday  
10/9/25



Tomorrow is World Heritage Day, Dress up in world heritage attire representing your assigned country, your own country, or dress up as tourists.

10/9/25

Friday  
10/10/25



No Homework

# RETELL

Retelling a story helps you understand it better.



Think about **WHO**, **WHAT**, **BUT**, and **HOW** to help you retell a story.

**WHO**  
Who is the main character?

**WHAT**  
What does the main character want?

**BUT**  
What problem does the main character face?

**HOW**  
How is the problem resolved at the end?

## Tell about

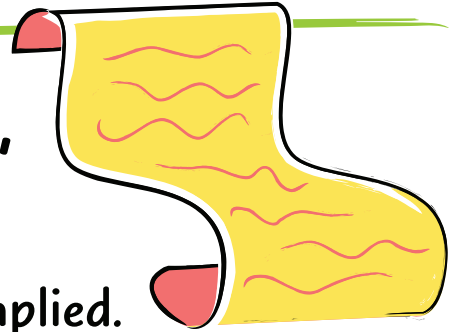
- important characters
- setting
- events in order—beginning, middle, and end
- conflict and resolution

## Use sequence words

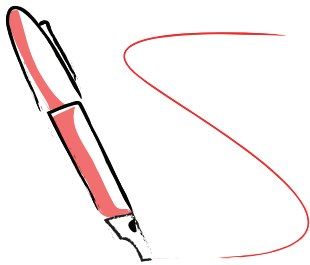
FIRST → NEXT  
THEN ← → LATER  
FINALLY

# THEME

The **theme** is the main message, lesson, or moral of the text.



The theme can be stated in text. Fables and myths might tell the theme at the end.



The theme can be implied. Use text clues to figure it out.

- ♥ What happens to the characters?
- ♥ How do the characters react?
- ♥ What do the characters learn?
- ♥ How do the characters grow or change?

**ASK:** What is the author trying to teach me?

## EXAMPLES

More can be achieved by working together.

It is best to tell the truth.

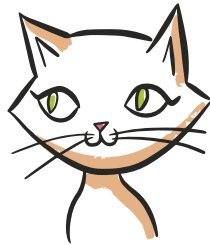
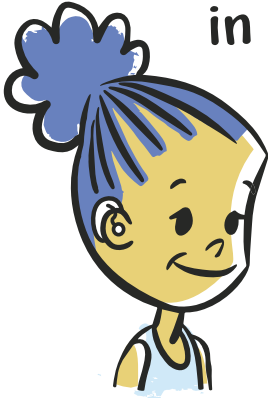
Don't give up.

# Literary Elements

Literary elements are the pieces that make up a story.

## Characters:

the people and animals in a story



- What do they say and think?
- What do they do?
- What do other characters say and think about them?

## Setting:

where and when the story takes place



- affects the plot because certain events happen in certain settings
- affects the plot by creating its mood

## Plot:

Conflict

the main problem that the characters face

Resolution

how the conflict or problem is solved

## Events:

things that happen in a story

- to **change** a character
- to **affect** the mood
- to **build** the plot

# AUTHOR'S CRAFT



**Author's Craft is the language and technique a writer uses to**

- **make his or her writing interesting.**
- **communicate ideas to the reader.**

Technique	What is it?	Example
<b>Voice</b>	the author's writing style that makes his or her writing unique	A writer uses certain words to show his or her style. An author's voice may change, depending on the genre of the text.
<b>Mood</b>	the emotions and feelings of the reader while reading a text	<b>mystery</b> = suspense or surprise <b>fantasy</b> = wonder or excitement <b>article</b> = serious or thoughtful
<b>Anecdote</b>	a short, funny, or interesting story related to a character or events	While on a school field trip, a teacher tells her students about a field trip she once took with her classmates.
<b>Language</b>	vocabulary, precise nouns, sensory words, and vivid verbs that make the text more interesting	Selma ate popcorn. ↓ Each <b>kernel</b> of the <b>buttery popcorn</b> <b>crunched loudly</b> in Selma's mouth.
<b>Hyperbole</b>	exaggerations that make things sound bigger, better, or more than what they truly are	That's a good idea. ↓ That's the best idea I have ever heard <b>in my life!</b>