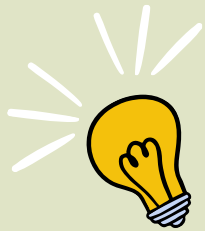


# Homework Tracker

## 4th Grade

Week of: 9/15/25



Details

Due Date

Check

Monday  
9/15/25



Reread, *Yes! We are Latinos* on HMH under the assignments tab. Study for Selection Quiz tomorrow.

9/15/25

Know It, Show It pages 12

9/18/25

BrainPOP: Point of View

9/19/25

Tuesday  
9/16/25



Reread, *The Year of the Rat* on HMH under the assignments tab. Study for Selection Quiz tomorrow.

9/17/25

Study for Spelling Test tomorrow

9/17/25

Wednesday  
9/17/25



Study for Module 1 Week 2 Assessment tomorrow. Review the following Anchor Charts to prepare: Character, Character Perspective, Elements of Poetry, & Point of View

9/18/25

Thursday  
9/18/25



No Homework

Friday  
9/19/25



# SPELLING LIST

## MODULE 1 WEEK 2: LONG AND SHORT E

- west
- steep
- member
- gleam
- fresh
- freedom
- speed
- steam
- beast
- believe
- speck
- kept
- cheap
- pretend
- greed

well done!

# Monitor and Clarify



**ASK:** Do I understand what I just read?

**No**

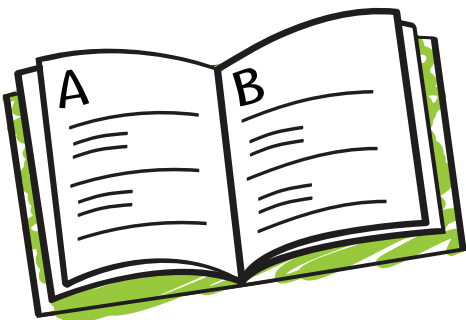


**Yes**

**KEEP READING!**

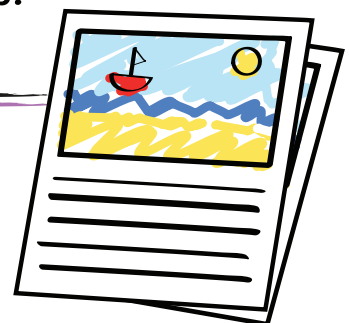
## When you don't understand a word . . .

- decode it again.
- look for context clues.
- replace it with another word.
- look it up in a dictionary or glossary.



## When a section of text is confusing . . .

- make notes about what confuses you.
- think about what you know.
- reread and look for details you might have missed.
- look at images and text features.



# CHARACTER

Major characters are central to a story. Minor characters support the major characters. Authors bring their characters and subjects to life in five key ways.

## Appearance

What does the character look like?

## Traits

What qualities or abilities does the character have?

## Voice and Dialogue

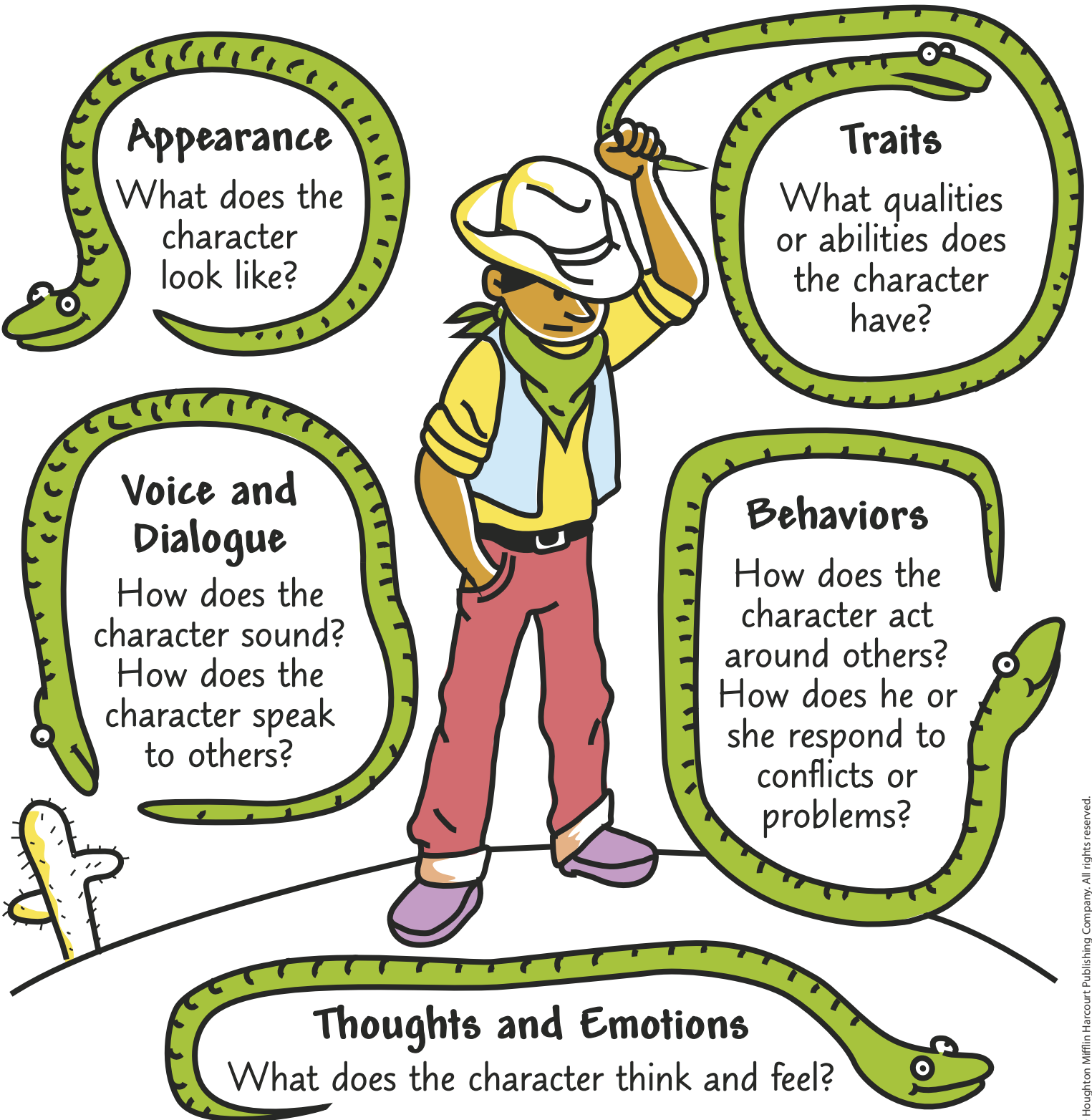
How does the character sound?  
How does the character speak to others?

## Behaviors

How does the character act around others?  
How does he or she respond to conflicts or problems?


## Thoughts and Emotions

What does the character think and feel?




# Character Perspective

A character's perspective is the way that character **sees, thinks, or feels** about something.



Hey, there's little Jack. I hope we can be friends.



Oh no! Mr. Giant is so **BIG** and scary!

- How do the characters view the other characters?
- How do the characters experience the events?
- How do the characters think and feel about the situation?
- It's a matter of perspective!

# Elements of Poetry

Poetry can tell a story, describe a situation, or appeal to the senses.

## Structure

**Line break**

→ where each line of text ends

**Stanza**

→ a group of lines within a poem

## Literary Devices

**Rhyming words**

→ words with the same ending sound at the end of lines or stanzas

**Rhythm**

→ a pattern of stressed syllables that create a **beat**

**Imagery**

→ words that create images that appeal to the senses

**Alliteration**

→ the same sound or letter at the beginning of words or lines

**Onomatopoeia**

→ a word that imitates the sound it represents, like **...buzz** and **THUD**

**Repetition**

→ lines or words that are repeated to stress importance

# Point of View

Who is telling the story?

## First-Person

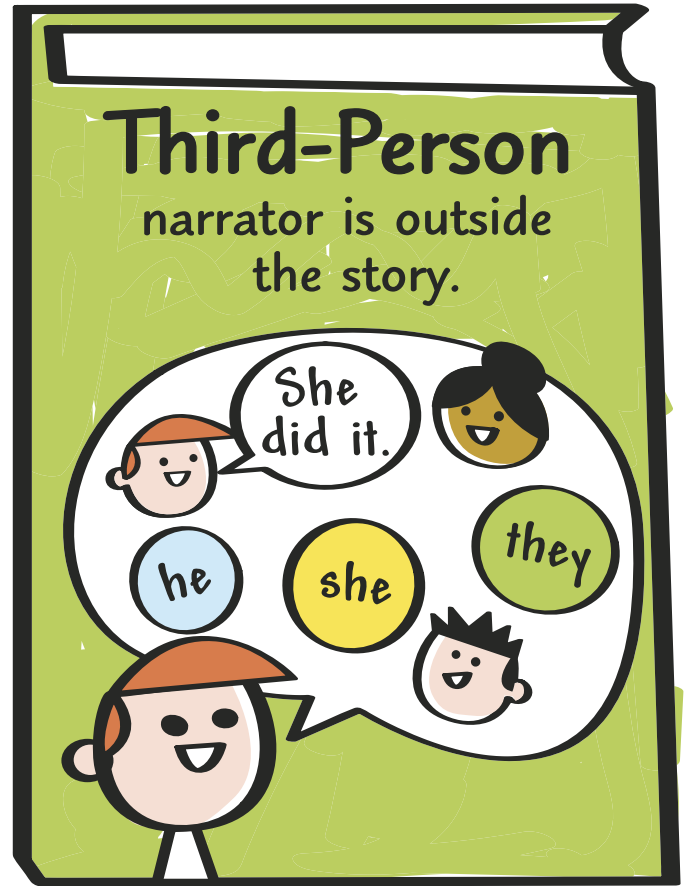
narrator is part of the story.



A story told in **first-person point of view** has a character in the story as the narrator. Readers learn about other characters from what they say to the narrator.

## Third-Person

narrator is outside the story.



A story told in **third-person point of view** has an outside narrator. The narrator can tell readers what all of the characters are saying, doing, and thinking.