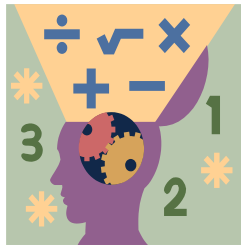


Name: _____ Section: _____



Homework

Greetings, Scholar and Parents! This week, we finish Chapter 2 – Division. Then, we begin the next chapter later on in the week, **Chapter 4, Adding & Subtracting Decimals.**

Extra Practice

Additional practice for the daily lessons is available on IXL. To access extra practice, please have your child login into IXL and see “**From Your Teacher**” section. These are recommended for reinforcement.

- [Divide 4-digit and 5-digit numbers by 2-digit numbers: write remainders as fractions](#)
- [Divide 3-digit by 2-digit numbers: interpret remainders](#)
- [Multi-step word problems: multiplicative comparison](#)
- [Number sequences involving decimals](#)
- [Add and subtract decimal numbers](#)
- [Add and subtract decimal numbers: word problems](#)
- [Add and subtract money: multi-step word problems](#)

Notes

This homework assignment is due on Sunday, September 14th. Students must prove and show all their work in the provide space. Scholars should use a separate sheet of paper if they need additional space. Failure to show work or packets submitted after the due date will result in a lower grade. If a scholar struggles with a lesson, they can review the daily lesson on HMH. Please feel free to contact me with any questions or concerns at peter.vanegas@archimedean.org.

<u>Monday</u>	September 8 th	STUDY GUIDE – MULT. & DIVISION
<u>Tuesday</u>	September 9 th	COMPLETE STUDY GUIDE
<u>Wednesday</u>	September 10 th	TEST DAY: CHPT. 1 – 3
<u>Thursday</u>	September 11 th	4.1 & 4.2 – Add/Sub Decimals
<u>Friday</u>	September 12 th	4.3 – Decimal Problems with Money

Patterns with Decimals

Go Online

Interactive Examples

Write a rule for the sequence. Then find the unknown term.

13. 2.6, 3.92, 5.24, 6.56, 7.88

14. 25.7, 24.1, _____, 20.9, 19.3

Think: $2.6 + ? = 3.92$; $3.92 + ? = 5.24$

$$2.6 + 1.32 = 3.92$$

$$3.92 + 1.32 = 5.24$$

Rule: _____ **add 1.32** _____

Rule: _____

Write the first four terms of the sequence.

15. **Rule:** start at 17.3, add 0.9

16. **Rule:** start at 28.6, subtract 3.1

_____, _____, _____, _____

_____, _____, _____, _____

Problem Solving

17. The Ride-It Store rents bicycles. The cost is \$8.50 for 1 hour, \$13.65 for 2 hours, \$18.80 for 3 hours, and \$23.95 for 4 hours. If the pattern continues, how much will it cost Nate to rent a bike for 6 hours?

Lesson Check

20. A store has a sale on books. The price is \$17.55 for one book, \$16.70 each for 2 books, \$15.85 each for 3 books, and \$15 each for 4 books. If this pattern continues, how much per book will it cost to buy 7 books?
-

Name _____

Add and Subtract Decimals Through Thousandths

Go Online

Interactive Examples

Find the sum or difference.

$$\begin{array}{r} 22. \quad 13.87 \\ + 6.06 \\ \hline \end{array}$$

$$\begin{array}{r} 23. \quad 26.25 \\ - 5.73 \\ \hline \end{array}$$

$$\begin{array}{r} 25. \quad 43.66 \\ - 9.08 \\ \hline \end{array}$$

$$\begin{array}{r} 26. \quad 6.27 \\ \quad 0.133 \\ + 4.31 \\ \hline \end{array}$$

Find the sum or difference.

$$28. \quad 6.389 + 17.39$$

$$29. \quad 8.747 - 4.8$$

Find the unknown numbers in the pattern.
Then write a description for the pattern

$$31. \quad 1.0, 2.1, 3.2, 4.3, \underline{\hspace{1cm}}, 6.5, 7.6$$

Description: _____

Problem Solving

33. Qiqi finished a biking race in 21.39 minutes. Juanita took 19.59 minutes to finish. How much longer did Qiqi take to finish the race than Juanita?

Lesson Check

Fill in the bubble completely to show your answer.

35. Dara spends \$13.02 on sandals, \$9.85 on shorts, and \$15.20 on a hat. How much change does she receive back from \$50?
- (A) \$10.93
- (B) \$11.93
- (C) \$11.34
- (D) \$12.67
36. Ling's relay team ran the first part of the race in 28.134 seconds, the second part in 17.922 seconds, and the third part in 34.023 seconds. By how many seconds did Ling's team beat the next closest team which, who ran the race in 83.736 seconds?
- (A) 3.412 seconds
- (B) 3.657 seconds
- (C) 3.327 seconds
- (D) 4.073 seconds
37. Juan has a batting average of 0.334. Gary has a batting average of 0.284. What is the difference between the batting averages of the two baseball players?
- (A) 0.50
- (B) 0.05
- (C) 0.028
- (D) 0.042
38. Giovanni is jogging from the park to the school. He has jogged 0.424 mile so far. He has 0.384 mile left to jog. How far is the park located away from the school?
- (A) 0.730 mile
- (B) 0.808 mile
- (C) 1.032 miles
- (D) 0.40 mile

Add and Subtract Money

Go Online

Interactive Examples

Use the table to solve Problems 8–9.

8. Dorian and Jack decided to go bowling. Jack is a member. They need only 1 lane, but each needs to rent shoes. If Jack pays for both of them with \$20, what change should he receive?

Calculate the cost: $\$7.50 + \$3.95 + \$2.95 = \14.40

Calculate the change: $\$20 - \$14.40 = \$5.60$

9. Kajal and her friends decided to rent 4 lanes at regular cost for a party. Ten people need to rent shoes, and 4 people are members. What is the total cost for the party?

Bowl-a-Rama		
	Regular Cost	Member's Cost
Lane Rental (up to 4 people)	\$9.75	\$7.50
Shoe Rental	\$3.95	\$2.95

Use the following information to solve Problems 10–12.

At the concession stand, medium sodas cost \$1.25 and hot dogs cost \$2.50.

10. Parvati's group brought in pizzas, but is buying drinks at the concession stand. How many medium sodas can Parvati's group buy with \$20? Make a table to show your answer.
11. Jack bought 2 medium sodas and 2 hot dogs. He paid with \$20. What was his change?
12. How much would it cost to buy 3 medium sodas and 2 hot dogs?

Lesson Check

14. Prakrit bought a pack of paper for \$5.69 and printer toner for \$9.76. He paid with a \$20 bill. What was his change?
15. Talim paid for her sandwich and drink with a \$10 bill and received \$0.63 in change. The sandwich was \$7.75. Sales tax was \$0.47. What was the cost of her drink?
