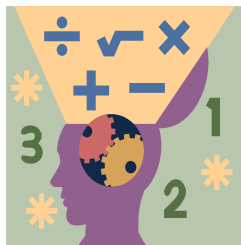


Name: _____ Section: _____



Homework

Greetings, Scholar and Parents! This week, we'll be tackling Chapter 2 – Division. It's essential that through this point in the year, that scholars review their times tables to focus more on newer, expanded processes rather than getting marred by multiplication!

Extra Practice

Additional practice for the daily lessons is available on IXL. To access extra practice, please have your child login into IXL. Under the **“What should I work on”** section, scholars will find Teacher Assigned Lessons. From there, you will see a list of lessons reinforcing the daily skills.

- [Divide 4-digit and 5-digit numbers by 2-digit numbers: write remainders as fractions](#)
- [Divide 3-digit numbers by 2-digit numbers: write remainders as fractions](#)
- [Divide 3-digit and 4-digit numbers by 2-digit numbers](#)
- [Divide 3-digit by 2-digit numbers: interpret remainders](#)
- [Multi-step word problems: multiplicative comparison](#)

Notes

This homework assignment is due on Sunday, September 7th. Students must prove and show all their work in the provide space. Scholars should use a separate sheet of paper if they need additional space. Failure to show work or packets submitted after the due date will result in a lower grade. If a scholar struggles with a lesson, they can review the daily lesson on HMH. Please feel free to contact me with any questions or concerns at peter.vanegas@archimedean.org.

<u>Monday</u>	September 1 st	Holiday! No work assigned.
<u>Tuesday</u>	September 2 nd	MATH PM1 – No Additional Work
<u>Wednesday</u>	September 3 rd	2.1
<u>Thursday</u>	September 4 th	2.2
<u>Friday</u>	September 5 th	2.4

Divide by 2-Digit Divisors

Go Online

Interactive Examples

Divide. Write the remainder as a fraction. Check your answer.

24. $385 \div 12$

$$\begin{array}{r} 32 \frac{1}{12} \\ 12 \overline{)385} \\ \underline{-36} \\ 25 \\ \underline{-24} \\ 1 \end{array}$$

26. $16,504 \div 55$

27. $5,634 \div 18$

30. $85 \overline{)1,955}$

31. $46 \overline{)57,624}$

Problem Solving

32. Factory workers make 756 machine parts in 36 hours. Suppose the workers make the same number of machine parts each hour. How many machine parts do they make each hour?
- _____

33. One bag holds 12 bolts. Several bags filled with bolts are packed into a box and shipped to the factory. The box contains a total of 2,760 bolts. How many bags of bolts are in the box?
- _____

Lesson Check

- 35.** A bakery packages 868 muffins into 31 boxes. The same number of muffins are put into each box. How many muffins are in each box?
- 36.** Maggie places 89 identical orders for her company. The total cost of the orders is \$10,324. How much is the cost of each order?

Interpret the Remainder

Go Online

Interactive Examples

Interpret the remainder to solve.

11. Warren spent 140 hours making 16 wooden toy trucks for a craft fair. If he spent the same amount of time making each truck, how many hours did he spend making each truck?


$$\begin{array}{r} 8 \\ 16 \overline{)140} \\ \underline{-128} \\ 12 \end{array}$$

 $8\frac{12}{16}$ hours

12. Mihir has 14,203 beads. He uses 36 beads to make one necklace. How many necklaces can he make?

Problem Solving

13. A campground has cabins that can each hold 28 campers. There are 148 campers visiting the campground. How many cabins are full if 28 campers are in each cabin?
14. Frida has 220 ounces of cleaning solution that she wants to divide equally among 12 large containers. How much cleaning solution should she put in each container?

15. **WRITE**  *Math* Suppose you have 192 marbles in groups of 15 marbles each. Find the number of groups of marbles that you have. Write the quotient with the remainder written as a fraction. Explain what the fraction part of your answer means.

Lesson Check

16. Henry and 28 classmates go to the roller skating rink. Each van can hold 11 students. If all of the vans are full except one, how many students are in the van that is not full?
17. Luiza buys 20 ounces of mixed nuts. She puts an equal number of ounces in each of 3 bags. How many ounces of mixed nuts will be in each bag? Write the answer as a whole number and a fraction.

Lesson Check

- 13.** Chelsea has 11 times as many art brushes as Monique. If they have 60 art brushes altogether, how many brushes does Chelsea have?
- 14.** Jo has a gerbil and a German shepherd. The shepherd eats 14 times as much food as the gerbil. Altogether, they eat 225 ounces of dry food per week. How many ounces of food does the German shepherd eat per week?
