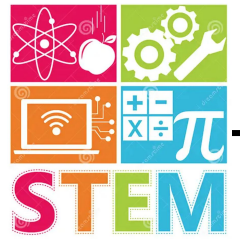


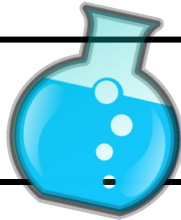
SCIENCE Newsletter



Week of : April 7th to April 11th, 2025

	4A,B,C,D,E Home Learning
Monday	Page 1 and 2 "Plant Structure and Function" ->Read carefully and use the text to answer the questions on page 2
Tuesday	
Wednesday	Page 3: Label the flower
Thursday	<i>Study the Quizlet!</i>
Friday	No Homework :)

Vocabulary



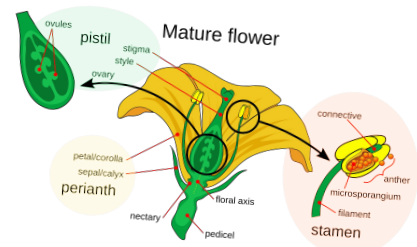
Topic 6: Plants and Animals - Lesson 1



Reminders



- Homework due on Friday 04/11
- Vocabulary Quiz on Monday 04/14



Name: _____

Date: _____



Plant Structure and Function

Content Goal: Construct an argument that plants have internal and external structures that support their survival, growth, behavior, and reproduction.

Learning Objective: Today I will construct an argument that plants have **external structures** that help its survival, reproduction, and growth.

Vocabulary:

1. **External Structures:** the outside parts of a plant
2. **Function:** the purpose of the parts of the plant (what it does)
3. **Reproduction:** the process of producing (making) new plants or animals

Structure and Function of a Plant

The main structures or 'organs' found in plants are the leaves, stems and roots. They each have structures suited to the jobs they perform. The table below summarizes the main features of these structures and their functions.

	Structure	Function
Flowers	<ul style="list-style-type: none"> Colorful, consists of petals, pistil, and stamen 	<ul style="list-style-type: none"> Reproduction (produce more plants)
Leaves	<ul style="list-style-type: none"> Thin with a large surface area 	<ul style="list-style-type: none"> The large surface area helps absorb light. Leaves are a plant's food factory. They are the main site of photosynthesis, where sugars are made from water and carbon dioxide, using sunlight energy.
Stems	<ul style="list-style-type: none"> Long and cylindrical (shaped like a cylinder) 	<ul style="list-style-type: none"> Support the leaves, flowers, and fruit. Can bend or resist the wind.
Roots	<ul style="list-style-type: none"> Branch throughout the soil 	<ul style="list-style-type: none"> Help the plant stay in place. Absorb water and nutrients. Transport water and nutrients.

Questions:

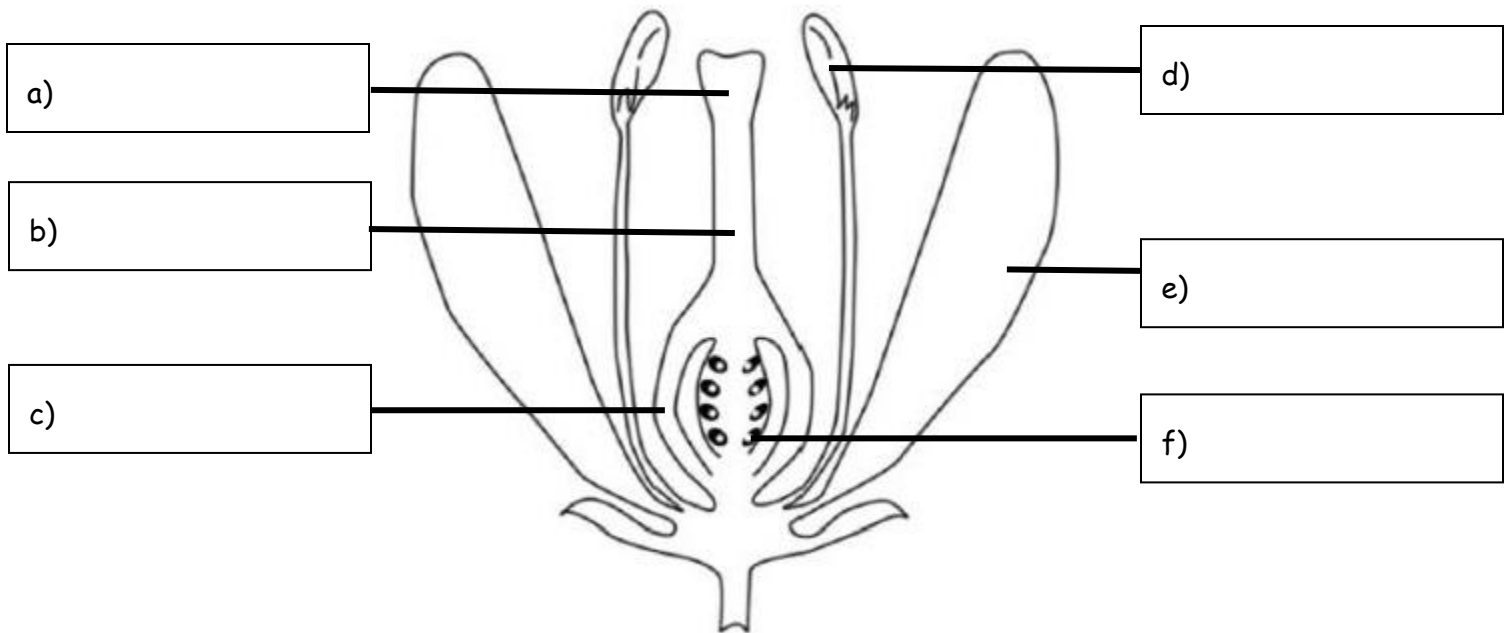
1. List the **external structures** of a plant:
2. It is a very windy day. Even the tall palm trees are shaking, and it looks like they will topple over, but they don't. How does a plant's **roots** and **stem** help it **survive** a windy environment?
3. Explain how a plant's **leaves** help it **grow**.
4. How do you think **flowers** help a plant **reproduce**? Make an educated guess based on what you know about plants.



Reproduction in flowering plants

1. Use the knowledge that you have gained in class to label the parts as shown in the diagram below. Use the words in the word bank.

ovule - petal - stigma - anther - style - ovary



2. Write down a heading for each box of flower parts.

Stigma

Style

Ovary

Anther

Filament