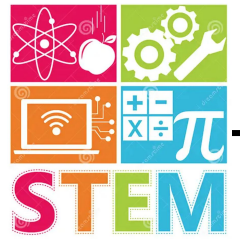


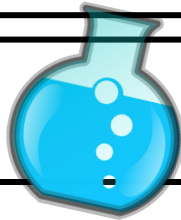
# SCIENCE Newsletter



**Week of :** March 24th to 28th, 2025

	4A,B,C,D,E Home Learning
Monday	Complete the Speed Calculations <a href="#">pg1</a> Study the Vocabulary <b>QUIZLET</b>
Tuesday	Complete the Speed Calculations <a href="#">pg2</a> Study the Vocabulary <b>QUIZLET</b>
Wednesday	Find the 10 Fastest Roller Coasters <a href="#">pg3</a> Study the Vocabulary <b>QUIZLET</b>
Thursday	<i>Study the Vocabulary QUIZLET</i>
Friday	No Homework:)

## Vocabulary



### STEM #3 Vocabulary



## Reminders



- Homework is due Friday 03/21
- Vocabulary Quiz on Friday 03/28/25





# Speed problems

How long will it take a bike rider to travel 36 mi at a constant speed of 9 miles per hour?

4 hours

$$9 \overline{)36}$$

$$\text{Time} = \text{Distance} \div \text{Speed}$$

If a car traveled 150 mi at a constant speed in 5 hours, at what speed was it traveling?

30 mph

$$5 \overline{)150}$$

$$\text{Speed} = \text{Distance} \div \text{Time}$$

If a bus travels for 5 hours at 40 mph, how far does it travel?

$$5 \times 40 = 200 \text{ mi}$$

$$\text{Distance} = \text{Speed} \times \text{Time}$$

A car travels along a road at a steady speed of 60 mph. How far will it travel in 6 hours?



A train covers a distance of 480 mi in 8 hours. If it travels at a constant speed, how fast is it traveling?

John walks at a steady speed of 3 mph. How long will it take him to travel 24 miles?



A car travels at a constant speed of 65 mph. How far will it have traveled in 4 hours?

Melanie completes a long distance run at an average speed of 6 mph. If it takes her 3 hours, how far did she run?

Sarah cycles 30 mi to her grandmother's house at a steady speed of 10 mph. If she leaves home at 2:00 P.M., what time will she arrive?





# Speed problems

How long would it take to travel

120 mi at 8 mph?

(Time = Distance  $\div$  Speed)

15 hours

$$\begin{array}{r} 15 \\ 8 \overline{)120} \end{array}$$

If a bus takes 3 hours to travel 150 mi,  
how fast is it going?

(Speed = Distance  $\div$  Time)

50 mph

$$\begin{array}{r} 50 \\ 3 \overline{)150} \end{array}$$

If a car travels at 60 mph for 2 hours,  
how far has it gone?

(Distance = Speed  $\times$  Time)

120 mi

$$\begin{array}{r} 60 \\ \times 2 \\ \hline 120 \end{array}$$

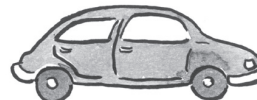
If a man walks for 6 miles at a  
steady speed of 3 mph, how long will  
it take him?



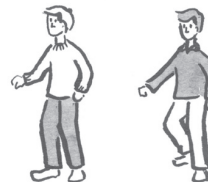
A truck driver travels 120 mi in 3 hours.  
If he drove at a steady speed how fast  
was he going?



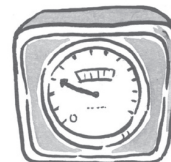
A car travels at a steady speed of 40 mph.  
How far will it travel in 4 hours?



Shane walks 10 mi at 4 mph. Damien  
walks 12 mi at 5 mph. Which of them will  
take the longest?



Courtney drives for 30 minutes at 50 mph  
and for 1 hour at 40 mph. How far has he  
traveled altogether?



A racing car travels 340 mi in 120 minutes.  
What speed is it traveling at?



# TOP 10 FASTEST ROLLER COASTERS IN THE WORLD

	Roller Coaster Name	Year Debuted	Location	Speed (mph)
1.				
2.				
3.				
4.				
5.				
6.				
7.				
8.				
9.				
10				

Find, paste, and label photos of some of these Roller Coasters.