

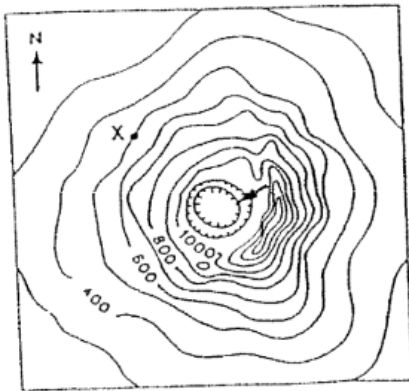
- _____ 10. The shortest distance between two points can be found by drawing a straight line between them on a
- a. Mercator projection
 - b. Gnomonic projection
 - c. conic projection
 - d. polyconic projection
- _____ 11. The German scientist Alfred Wegener proposed the existence of a huge landmass called
- a. Panthalassa
 - b. Eurasia
 - c. Pangaea
 - d. Mesosaurus
- _____ 12. Which of these did **Wegener** use to support continental drift?
- a. spreading on the ocean floor
 - b. magnetic reversal recorded on Pangaea
 - c. convection currents in the lithosphere
 - d. similar rocks on different continents
- _____ 13. An underwater mountain chain formed with molten rock from seafloor spreading is called a
- a. divergent boundary
 - b. subduction zone
 - c. mid-ocean ridge
 - d. Convergent boundary
- _____ 14. The layer of mantle with plastic rock that underlies and moves the plates is called the
- a. lithosphere
 - b. asthenosphere
 - c. Oceanic crust
 - d. terrane
- _____ 15. Tectonic plates make up Earth's
- a. lithosphere
 - b. asthenosphere
 - c. outer core
 - d. inner core
- _____ 16. A continental-continental collision causes
- a. oceanic-continental subduction to occur.
 - b. mountain ranges to occur.
 - c. oceanic-oceanic subduction to occur.
 - d. Hot spots to form.
- _____ 17. To date, scientists have identified approximately
- a. 5 plates.
 - b. 15 plates.
 - c. 30 plates.
 - d. 50 plates.
- _____ 18. How did the discovery of magnetic reversals help to develop the theory of plate tectonics?
- a. It showed that Earth's magnetic field changes over time.
 - b. It allowed hot spots to be used to track plate movements.
 - c. It proved that Earth's magnetic poles change places.
 - d. It provided more evidence that plates move away from mid-ocean ridges.

- _____ 19. Crust is neither created nor destroyed along
- a. transform boundaries
 - b. Oceanic-oceanic boundaries
 - c. divergent boundaries
 - d. Convergent boundaries

- _____ 20. At a mid-ocean ridge, the pattern formed by magnetic minerals
- a. is older along mid-ocean ridges and younger near ocean trenches.
 - b. shows that hot spots in Earth's mantle cause volcanoes to form.
 - c. is randomly arranged at the ridge.
 - d. is the same on either side of the ridge.

21. What is wrong with the following locations: 135° N, 185° E?

Use the topographic map below to answer questions 22-25



22. What is the contour interval for the above map?

23. At what elevation, in meters, is the point labeled X on the map?

24. Which feature is indicated by the arrow?

25. Contour intervals are most likely to be smallest on maps of what type of terrain?