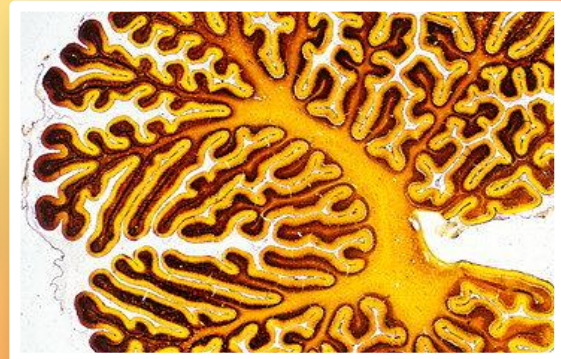
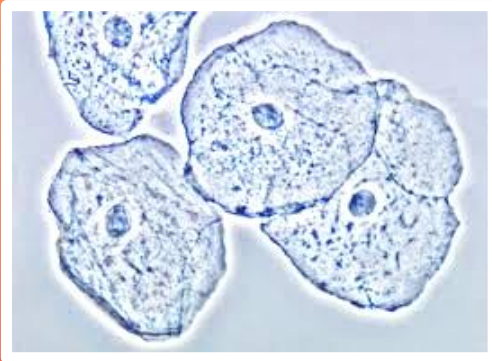
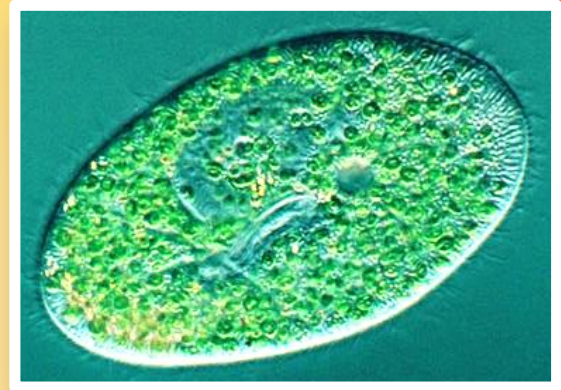
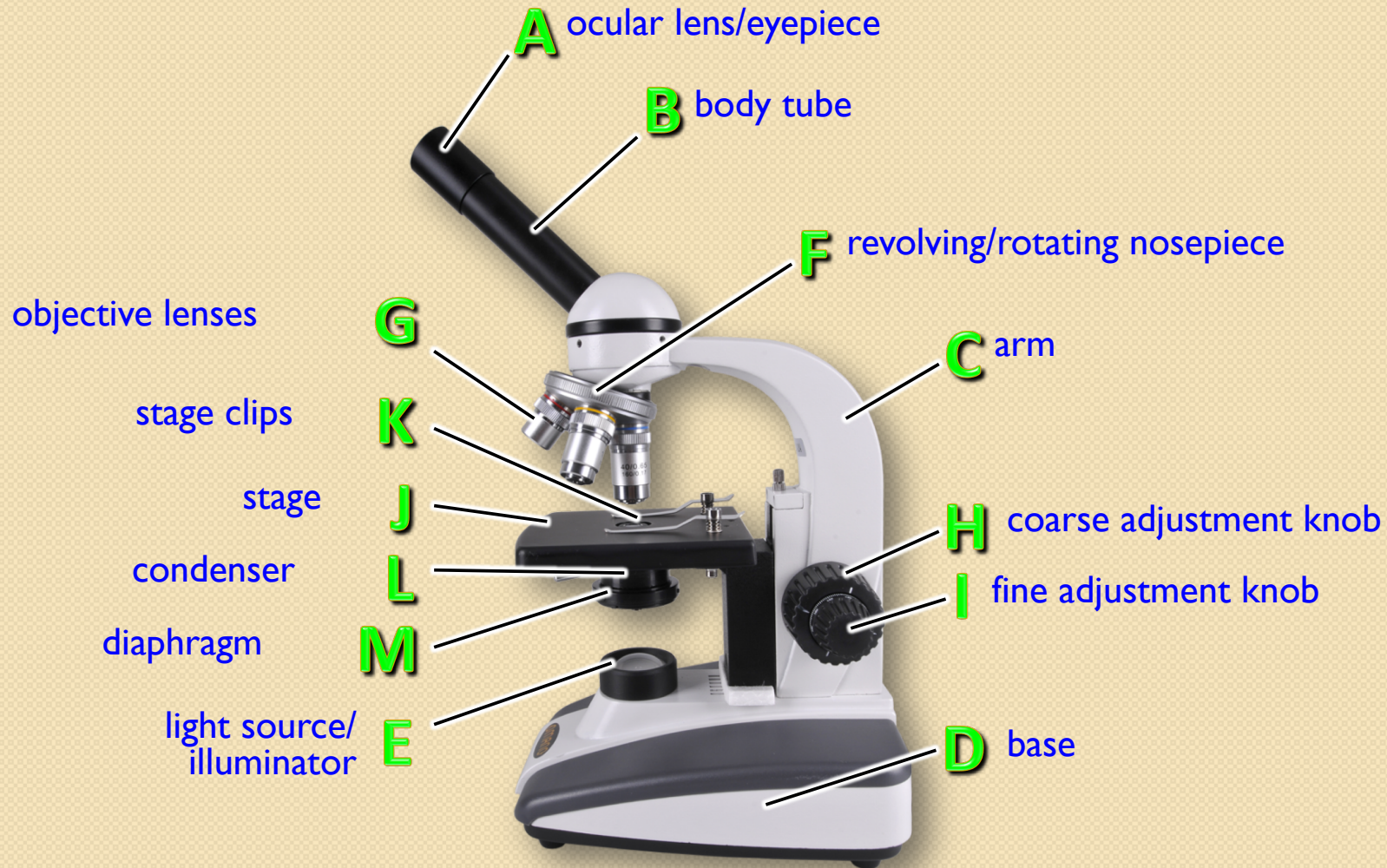


MICROSCOPE PARTS



PARTS OF THE COMPOUND LIGHT MICROSCOPE



PARTS OF THE COMPOUND LIGHT MICROSCOPE

Ocular Lens / Eyepiece



- Contains a lens to magnify the image of the specimen.
- The usual magnification is 10 X.
- Some microscopes have two ocular lenses.

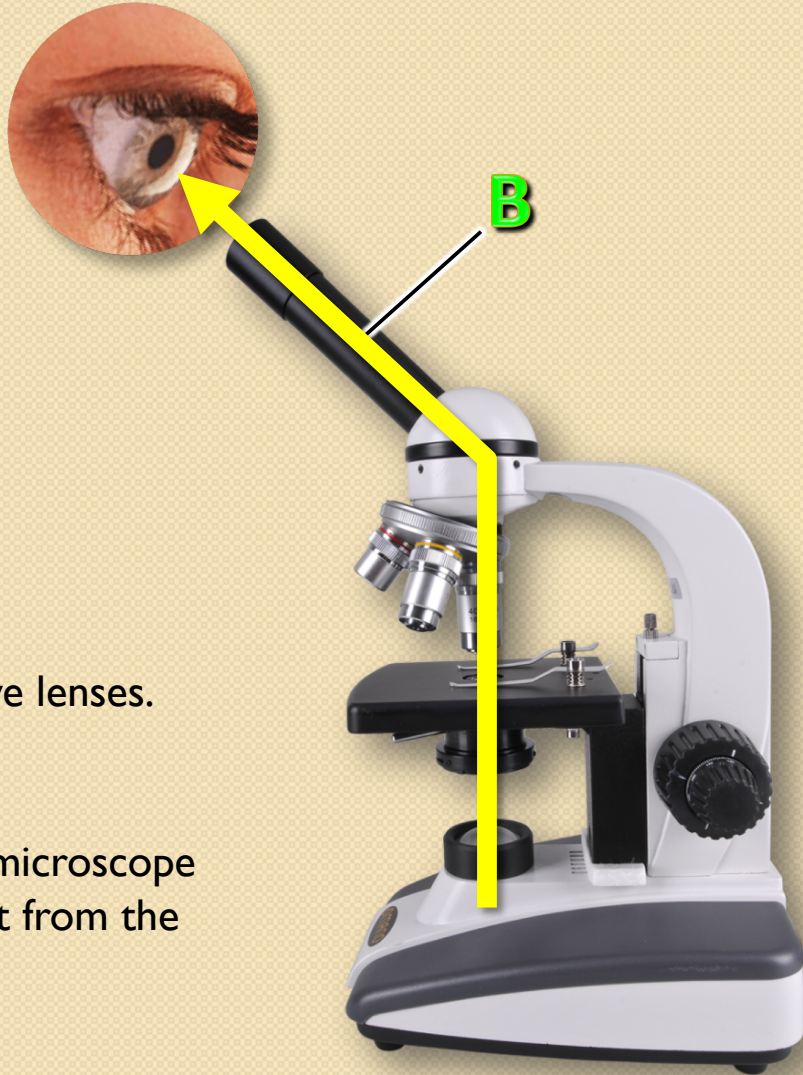


PARTS OF THE COMPOUND LIGHT MICROSCOPE

Body Tube



- It connects the eyepiece to the objective lenses.
- It ensures the correct alignment of the microscope components to correctly direct the light from the specimen into the viewer's eye

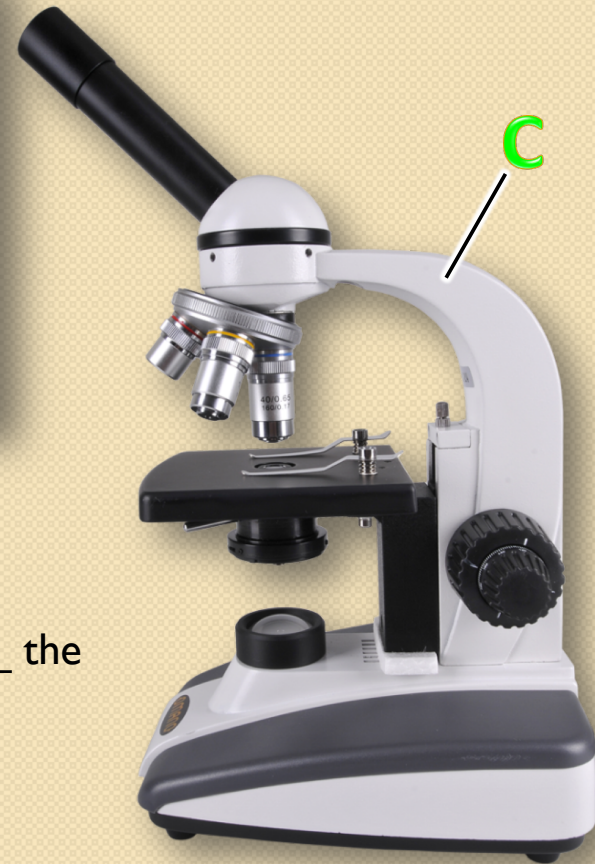


PARTS OF THE COMPOUND LIGHT MICROSCOPE

Arm



- It connects the body tube to the base.
- One hand should be around the arm when carrying the microscope (the other should be under the base)



PARTS OF THE COMPOUND LIGHT MICROSCOPE

Base

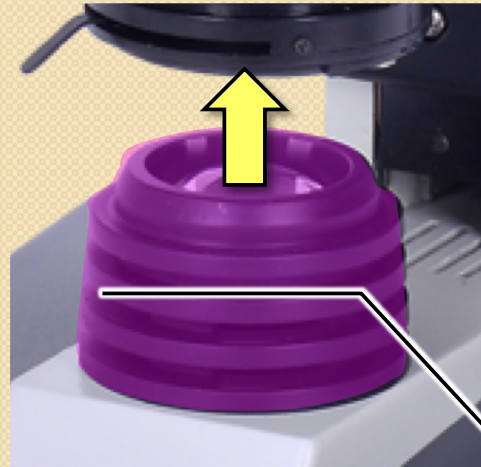


- It supports the weight of the microscope.
- It contains the electronics and light source.
- One hand should be under the base while carrying the microscope (the other hand should be holding the arm).



PARTS OF THE COMPOUND LIGHT MICROSCOPE

Light Source / Illuminator



- It sends light upwards through the condenser lens and through the hole in the stage onto the specimen on the slide.
- Older microscopes used to use mirrors to reflect the ambient light upwards.

