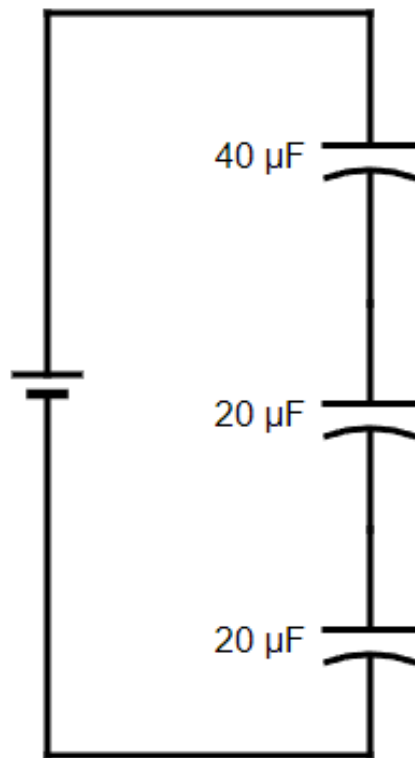
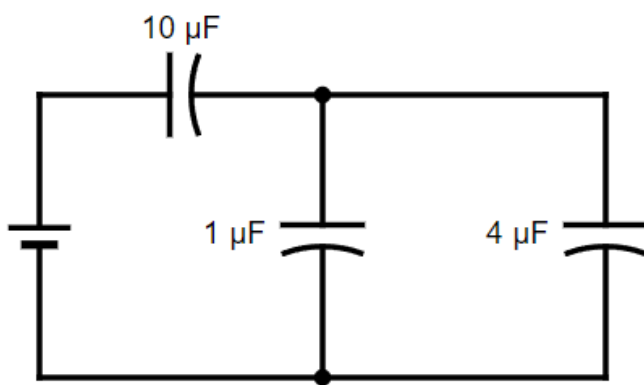


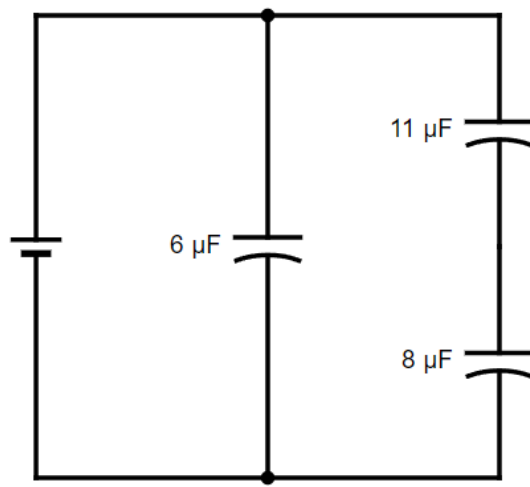
1. Identify the total capacitance of the circuit below.



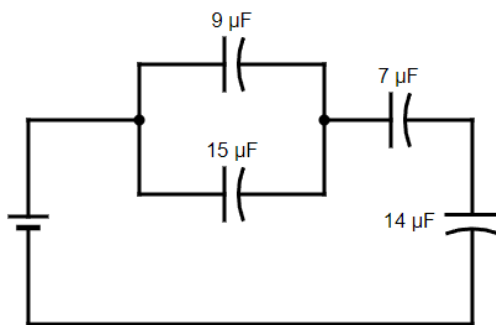
2. Given of the figure below, find the total capacitance of the circuit. Round off your answer to the nearest tenths.



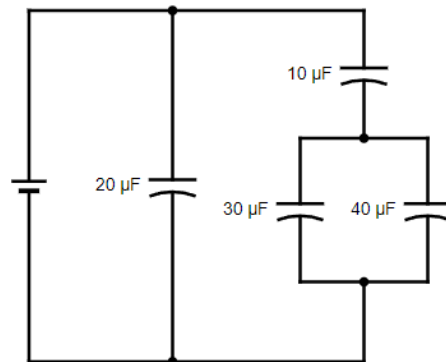
3. Use the illustration below and determine the total capacitance of the circuit. Round off your answer to the nearest tenths.



4. Analyze the diagram below. What is the total capacitance of the circuit? Round off your answer to the nearest hundredths.



5. Which of the following choices corresponds to the total capacitance of the circuit?



Evaluate the circuit displayed below. Solve for the total capacitance.

