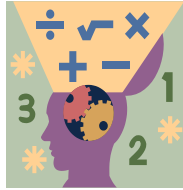


Name: \_\_\_\_\_ Section: \_\_\_\_\_



### Homework

**Please do not work ahead on homework assignments.** Failure to complete homework will result in points deducted.

**Chapter 23 Quiz on Thursday, May 9th.**

### Extra Practice

Please have your child use Reflex Math to master and reinforce their fact fluency. The 3<sup>rd</sup> Grade curriculum depends on a strong foundation in multiplication and division facts.

### Notes

Please feel free to contact me with any questions or concerns at [diana.charaf@archimedean.org](mailto:diana.charaf@archimedean.org).

Monday, May 6th

- Lessons: SS.6 and TT.2 on IXL

Tuesday, May 7th

- Lessons: TT.5 and TT.6 on IXL

Wednesday, May 8th

-Lessons: UU.4 and UU.5 on IXL

Thursday, May 9th

- Lessons: UU.6 and UU.7 on IXL

Friday, May 10th

- Lessons: UU.8 and UU.1