

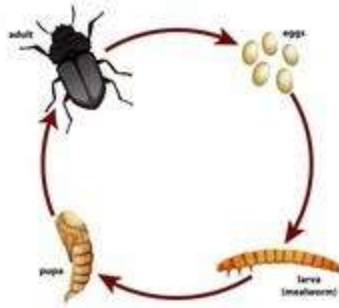
Science Homework: Animals

Name: _____

Class: _____ Date: _____

1. What is the first stage of the frog life cycle?
 - a. eggs
 - b. tadpole
 - c. froglet
 - d. adult
2. How many stages are there in the butterfly life cycle? _____

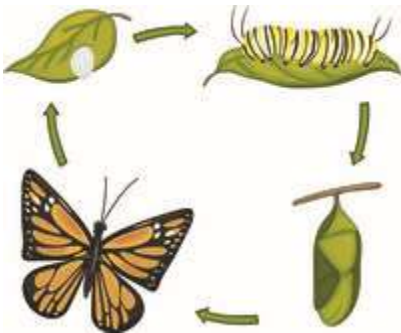
Darkling Beetle Life Cycle



3. The second stage of an insect is a worm-like stage called _____.
 - a. tadpole
 - b. larva
 - c. offspring
4. After a frog hatches from an egg it looks just like an adult frog.
 - a. True
 - b. False
5. Choose the correct sequence of the frog's life cycle
 - a. froglet, tadpole, frog, and egg
 - b. egg, frog, tadpole, and froglet
 - c. egg, tadpole, froglet, and frog



6. Which animal has a similar life cycle as the butterfly.
- a. Ladybug
 - b. Frog
 - c. Dolphin



7. What are the stages called that show how a caterpillar turns into a butterfly?
- a. Life Cycle
 - b. Process
 - c. Life Steps



8. Which animal's life cycle begins with a live baby?
- a. swan
 - b. tiger
 - c. snake



9. A caterpillar will change into what?
- a. pupa
 - b. mealworm
 - c. butterfly
 - d. frog
10. Birds and amphibians give birth to live young.
- a. True
 - b. False
11. Horses are mammals. They go through metamorphosis.
- a. True
 - b. False
12. _____ is a major change in the form of an animal during its life cycle.
- a. Larva
 - b. Pupa
 - c. Metamorphosis
13. A _____ is an immature frog that must live in the water.
- a. tadpole
 - b. butterfly
 - c. foal
14. A tadpole lives in water and breathes with _____.
- a. gills
 - b. lungs