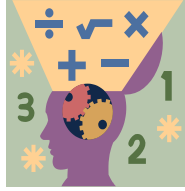


Name: \_\_\_\_\_ Section: \_\_\_\_\_



### Homework

We will begin Chapter 3 this week, *Addition and Subtraction Strategies*. Please complete homework daily based on the schedule provided below. **Please do not work ahead on homework assignments.** Failure to complete homework or bring packet to class will result in points deducted. **Scholars will complete Chapters 1 and 2 test on Tuesday, September 5th.**

### Reminders

Please have your child use Reflex Math to master and reinforce their fact fluency. The 3<sup>rd</sup> Grade curriculum depends on a strong foundation in multiplication and division facts.

Reflex Math and IXL login cards are inside the red folder.

### Extra Practice

Additional practice for the daily lesson is available on HMH. To access, please login to HMH, you can find assigned lessons. The assigned lessons on HMH are not homework and will not be graded.

### Notes

Homework will be collected on **Monday, September 11th**

If a scholar struggles with a lesson, they can review the daily lesson on Archimedean Cinemath. Please feel free to contact me with any questions or concerns at [diana.charaf@archimedean.org](mailto:diana.charaf@archimedean.org)

Tuesday                      September 5<sup>th</sup>                      – Lessons A6 and C1 on IXL

Wednesday                      September 6<sup>th</sup>                      – pages 75 and 76

Thursday                      September 7<sup>th</sup>                      – pages 87 and 88

Friday                      September 8<sup>th</sup>                      – Lessons D1 and D2 on IXL

<u>Monday</u> September 4th	<u>Tuesday</u> September 5th	<u>Wednesday</u> September 6th	<u>Thursday</u> September 7th	<u>Friday</u> September 8th
No HW				

## Identify Number Patterns on the Addition Table

**Go Online**

Interactive Examples

1. Write a rule for the pattern. Then write the sixth and seventh numbers.

6, 13, 20, 27, 34, \_\_\_\_\_, \_\_\_\_\_ Rule: \_\_\_\_\_

2. Write a rule for the pattern. Then write the second number.

21, \_\_\_\_\_, 17, 15 Rule: \_\_\_\_\_

3. Create a pattern that uses the rule *Subtract 9*. Write the first, second, third, fourth, and fifth numbers. Circle the fourth number.

\_\_\_\_\_

Is the sum even or odd? Write *even* or *odd*.

4.  $5 + 2$  \_\_\_\_\_

5.  $6 + 4$  \_\_\_\_\_

6.  $1 + 0$  \_\_\_\_\_

7.  $5 + 5$  \_\_\_\_\_

8.  $3 + 8$  \_\_\_\_\_

9.  $7 + 7$  \_\_\_\_\_

## Problem Solving

10. Ada writes two patterns.

24, 27, \_\_\_\_\_, 33, 36


50, 42, 34, \_\_\_\_\_, 18

Maria creates a pattern. The first number of Maria's pattern is the difference between the missing numbers in Ada's first and second patterns. What is the first number of Maria's pattern?

\_\_\_\_\_

11. Verlin says he has an odd number of model cars. He has 6 cars on one shelf and 8 cars on another shelf. Is Verlin correct? Explain.

\_\_\_\_\_  
\_\_\_\_\_  
\_\_\_\_\_

12.  **WRITE** *Math* Write the definition of the Identity Property of Addition. Use the addition table to provide examples.

\_\_\_\_\_  
\_\_\_\_\_

Lesson Check

13. Marvella adds an odd number to an even number. Is the sum even or odd?
14. Write the rule. Then write the fourth number in the pattern.

17, 14, 11, \_\_\_\_\_, 5, 2

Rule:\_\_\_\_\_

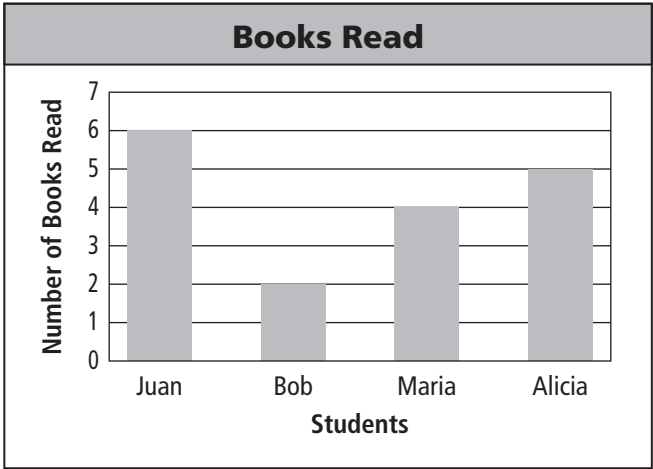
Spiral Review

15. Zachriel has 2 quarters, 1 dime, and 3 pennies. How much money does Zachriel have?
16. Oria estimates the height of his desk. What is a reasonable estimate?

Use the bar graph for problems 17–18.

17. Who read the most books?

18. Who read 3 more books than Bob?



# Estimate Sums

Go Online

Interactive Examples

Use rounding or compatible numbers to estimate the sum.

$$\begin{array}{r} 1. \quad 171 \\ + 727 \\ \hline \end{array} \quad \begin{array}{r} 175 \\ + 725 \\ \hline 900 \end{array}$$

$$\begin{array}{r} 2. \quad 87 \\ + 34 \\ \hline \end{array}$$

$$\begin{array}{r} 3. \quad 222 \\ + 203 \\ \hline \end{array}$$

$$\begin{array}{r} 4. \quad 52 \\ + 39 \\ \hline \end{array}$$

$$\begin{array}{r} 5. \quad 256 \\ + 321 \\ \hline \end{array}$$

$$\begin{array}{r} 6. \quad 302 \\ + 412 \\ \hline \end{array}$$

7.  $325 + 458$

$$\underline{\hspace{2cm}} + \underline{\hspace{2cm}} = \underline{\hspace{2cm}}$$

8.  $620 + 107$

$$\underline{\hspace{2cm}} + \underline{\hspace{2cm}} = \underline{\hspace{2cm}}$$

## Problem Solving

9. Stephanie read 72 pages on Sunday and 83 pages on Monday. About how many pages did Stephanie read during the two days?

---

10. Mateo biked 345 miles last month. This month he has biked 107 miles. Altogether, about how many miles has Mateo biked last month and this month?

---

11.  **WRITE** *Math* Explain how to estimate  $368 + 231$  two different ways.

---

---

## Lesson Check

12. The McBrides drove 317 miles on one day and 289 miles on the next day. Estimate the number of miles the McBrides drove during the two days.
13. Rakesh counted 63 birds in his backyard last week. This week, he counted 71 birds in his backyard. About how many birds did Rakesh count?

---

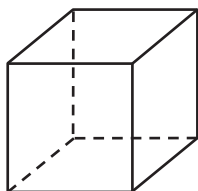
---

---

---

## Spiral Review

14. What name describes this shape?
15. Is the sum even or odd?



$$6 + 7$$

---

---

16. What is 503 rounded to the nearest hundred?
17. What is 645 rounded to the nearest ten?

---

---