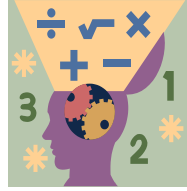


Name: _____ Section: _____



Homework

We will begin Chapter 2 this week, Whole Number Place Value. Please complete homework daily based on the schedule provided below. **Please do not work ahead on homework assignments.** Failure to complete homework or bring packet to class will result in points deducted. Scholars will complete the Chapter 1 and 2 Test on Tuesday, September 5th.

Reminders

Please have your child use Reflex Math to master and reinforce their fact fluency. The 3rd Grade curriculum depends on a strong foundation in multiplication and division facts. Reflex Math login cards are inside the red folder.

Extra Practice

Additional practice for the daily lesson is available on HMH. To access, please login to HMH, you can find assigned lessons. The assigned lessons on HMH are not Homework and will not be graded. If a scholar struggles with a lesson, they can review the daily lesson on Archimedean Cinemath.

Notes

Homework for this week will be on IXL. Homework must be completed before Sunday, September, 3rd. Please feel free to contact me with any questions or concerns at diana.charaf@archimedean.org.

Monday August 28th – IXL : A1, A2

Tuesday August 29th – IXL: A3, A4

Wednesday August 30th – IXL: A5, B1

Thursday August 31st –IXL: B2, B3

Friday September 1st –IXL: C2, C3

<u>Monday</u> August 28 th	<u>Tuesday</u> August 29 th	<u>Wednesday</u> August 30 th	<u>Thursday</u> August 31 st	<u>Friday</u> September 1 st