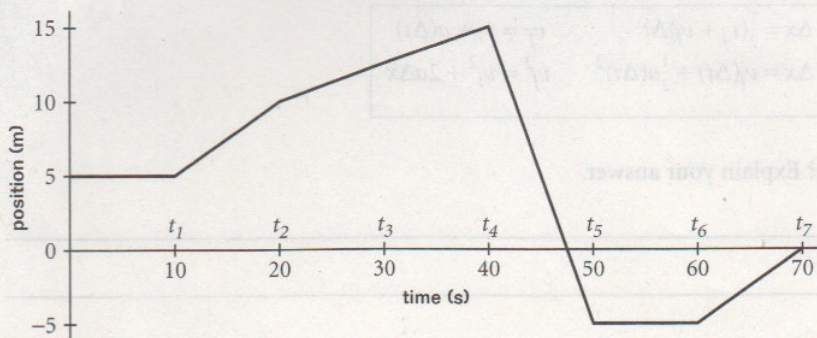


Motion in One Dimension**HOLT PHYSICS****Graph Skills***Displacement and Velocity*

A minivan travels along a straight road. It initially starts moving toward the east. Below is the position-time graph of the minivan. Use the information in the graph to answer the questions.



1. Does the minivan move to the east? If so, during which time interval(s)?

2. Does the minivan move to the west? If so, during which time interval(s)?

3. Is the minivan's speed between t_1 and t_2 greater than, less than, or equal to its speed between t_2 and t_3 ?

4. Is the minivan's speed between t_4 and t_5 greater than, less than, or equal to its speed between t_6 and t_7 ?

5. Does the minivan ever stop completely? If so, at which time(s)?

6. Does the minivan ever move with a constant velocity? If so, at which time(s)?

7. What is the total displacement of the minivan during the trip?
