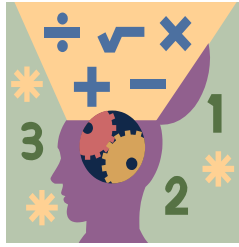


Name: _____ Section: _____



Homework

Hello Scholars and Parents. We will begin working on Chapter 6 this week. Scholars will generate equivalent fractions, find the simplest form of a fraction, and determine a common denominator for a pair of fractions. Scholars will complete the Chapter 6 Mid-Chapter Checkpoint on Friday December 4. Please feel free to contact me with any questions or concerns at morales.zervos@archimedeian.org.

Reminders

Please have your child use Reflex Math to practice and reinforce their fact fluency. The 4th Grade curriculum depends on a strong foundation in multiplication and division facts.

Extra Practice

Additional practice for the daily lesson is available on Archie. To access the worksheets, please have your child login into Archie. Click on Resources, select courses, then My Courses. From there, you will see a drop down menu of each class. Go to American Math and click on Resources. There you will see worksheets for each section in the chapter.

Notes

Homework is assigned through Think Central. If a scholar struggles with a question, the program includes tools providing step by step support as well as viewing an example. When scholars finish their homework lesson, please click on the button “Turn It In”. Completed homework is due by Sunday December 6th. Students should take the time to prove and show all their work on a separate piece of paper.

<u>Monday</u>	November 30 th	– Think Central – Lesson 6.1
<u>Tuesday</u>	December 1 st	– Think Central – Lesson 6.2
<u>Wednesday</u>	December 2 nd	– Think Central – Lesson 6.3
<u>Thursday</u>	December 3 rd	– Think Central – Lesson 6.4
<u>Friday</u>	December 4 th	– Finish Think Central Homework

<u>Monday</u> November 30 th	<u>Tuesday</u> December 1 st	<u>Wednesday</u> December 2 nd	<u>Thursday</u> December 3 rd	<u>Friday</u> December 4 th