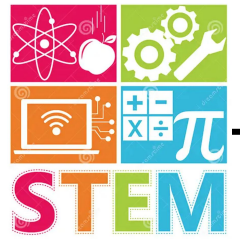


SCIENCE Newsletter



Week of : April 15th to April 19th, 2024

4A,B,C,D,E Home Learning

	4A,B,C,D,E Home Learning
Monday	Complete the Speed Calculations pg1
Tuesday	Complete the Speed Calculations pg2
Wednesday	Find the 10 Fastest Roller Coasters pg3
Thursday	Study the Vocabulary QUIZLET
Friday	No Homework, Enjoy your weekend:)

Vocabulary



speed
acceleration
velocity
friction
force
gravity
inertia
thrills

Reminders



➤ Homework due Friday
04/19

STEM #3 Vocabulary Quizlet





Speed problems

How long will it take a bike rider to travel 36 mi at a constant speed of 9 miles per hour?

4 hours

$$9 \overline{)36}$$

$$\text{Time} = \text{Distance} \div \text{Speed}$$

If a car traveled 150 mi at a constant speed in 5 hours, at what speed was it traveling?

30 mph

$$5 \overline{)150}$$

$$\text{Speed} = \text{Distance} \div \text{Time}$$

If a bus travels for 5 hours at 40 mph, how far does it travel?

$$5 \times 40 = 200 \text{ mi}$$

$$\text{Distance} = \text{Speed} \times \text{Time}$$

A car travels along a road at a steady speed of 60 mph. How far will it travel in 6 hours?



A train covers a distance of 480 mi in 8 hours. If it travels at a constant speed, how fast is it traveling?

John walks at a steady speed of 3 mph. How long will it take him to travel 24 miles?



A car travels at a constant speed of 65 mph. How far will it have traveled in 4 hours?

Melanie completes a long distance run at an average speed of 6 mph. If it takes her 3 hours, how far did she run?

Sarah cycles 30 mi to her grandmother's house at a steady speed of 10 mph. If she leaves home at 2:00 P.M., what time will she arrive?





Speed problems

How long would it take to travel

120 mi at 8 mph?

(Time = Distance \div Speed)

15 hours

$$\begin{array}{r} 15 \\ 8 \overline{)120} \end{array}$$

If a bus takes 3 hours to travel 150 mi,
how fast is it going?

(Speed = Distance \div Time)

50 mph

$$\begin{array}{r} 50 \\ 3 \overline{)150} \end{array}$$

If a car travels at 60 mph for 2 hours,
how far has it gone?

(Distance = Speed \times Time)

120 mi

$$\begin{array}{r} 60 \\ \times 2 \\ \hline 120 \end{array}$$

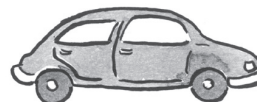
If a man walks for 6 miles at a
steady speed of 3 mph, how long will
it take him?



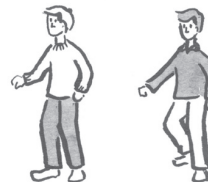
A truck driver travels 120 mi in 3 hours.
If he drove at a steady speed how fast
was he going?



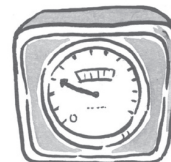
A car travels at a steady speed of 40 mph.
How far will it travel in 4 hours?



Shane walks 10 mi at 4 mph. Damien
walks 12 mi at 5 mph. Which of them will
take the longest?



Courtney drives for 30 minutes at 50 mph
and for 1 hour at 40 mph. How far has he
traveled altogether?



A racing car travels 340 mi in 120 minutes.
What speed is it traveling at?



TOP 10 FASTEST ROLLER COASTERS IN THE WORLD

	Roller Coaster Name	Year Debuted	Location	Speed (mph)
1.				
2.				
3.				
4.				
5.				
6.				
7.				
8.				
9.				
10				

Find, paste, and label photos of some of these Roller Coasters.