

FUNCTIONS of the SKELETAL SYSTEM

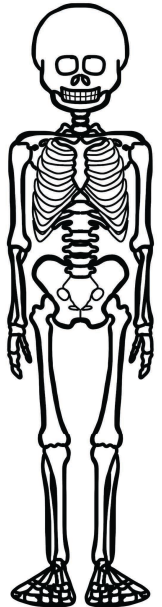
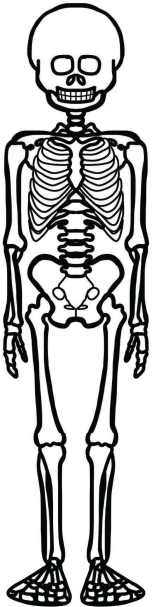
#1

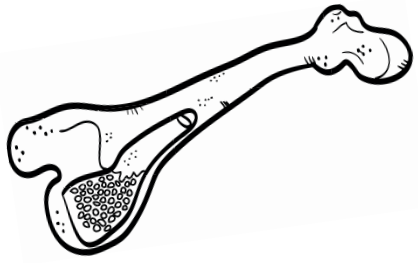
#2

#3

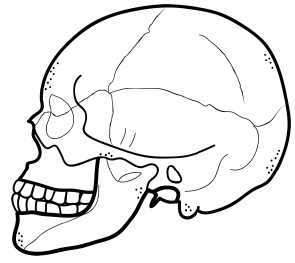
#4

#5





Bones



are

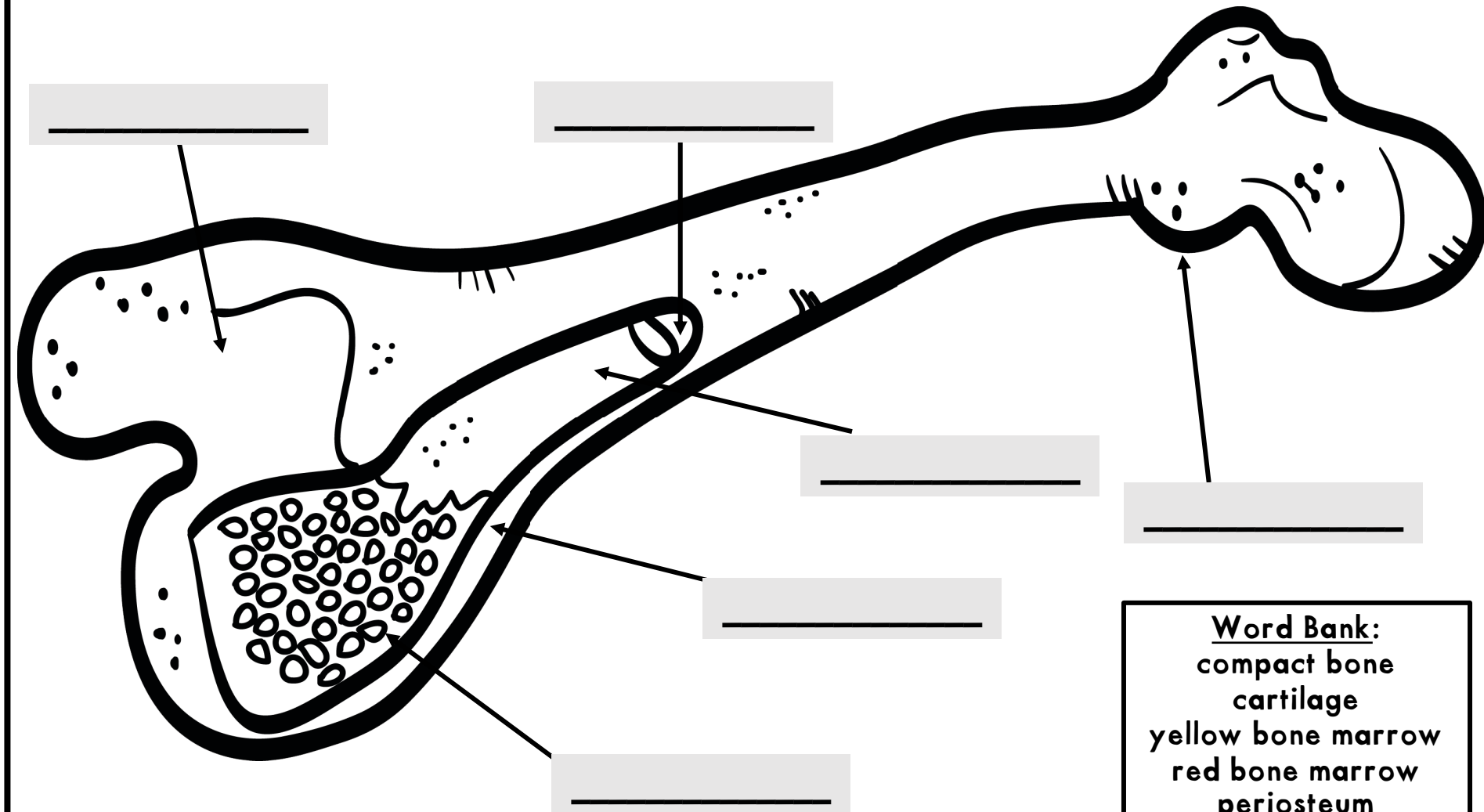
can

have

[illegible]This image shows a blank sheet of white paper with horizontal ruling lines. The lines are evenly spaced and run across the width of the page. There are no margins, text, or other markings on the paper.[illegible]

Bone Layers

Name _____



Word Bank:
compact bone
cartilage
yellow bone marrow
red bone marrow
periosteum
cancellous bone

TYPES of BONES

Name _____

Cut-and-paste

Directions: Cut and paste the sentences below into the correct box.

long bones

short bones

flat bones

irregular bones

Bones that do not fit into any other shape category

found in the skull, shoulder blades, and breastbone

Bones that are as wide as they are long.

Bones that are about equal length, width, and thickness.

These bones are often slightly curved and thin.

found in your arms and legs

They are complex in shape like vertebrae & facial bones.

Found in your fingers and toes

found in your wrists and ankles

Bones that are large, strong, and flat.

Bones that are longer than they are wide.