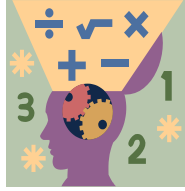


Name: \_\_\_\_\_ Section: \_\_\_\_\_



### Homework

This week we will begin Chapter 11 (Multiplication with Multiples of 10 and 100). Complete homework daily based on the schedule provided below. Please do not work ahead on homework assignments. Failure to complete homework will result in points deducted.

### Reminders

Please have your child use Reflex Math to master and reinforce their fact fluency. The 3<sup>rd</sup> Grade curriculum depends on a strong foundation in multiplication and division facts.

### Extra Practice

Additional practice for the daily lesson is available on HMH. To access login in into HMH, go to assigned lessons. There you can find the assigned lessons for extra practice. Scholars can also review daily lesson on Archimedean Cinemath, under section 3A for all sections.

### Notes

Complete all homework by **Sunday, November 19th**  
Please feel free to contact me with any questions or concerns at [diana.charaf@archimedean.org](mailto:diana.charaf@archimedean.org).

**Monday, November 13th** – T.2 and T.3 on IXL

**Tuesday, November 14th** – T.4 and T.5 on IXL

**Wednesday, November 15th** – T.1 and T.6 on IXL

**Thursday, November 16th** – T.7 and T.8 on IXL

**Friday, November 17th** – T.9 on IXL