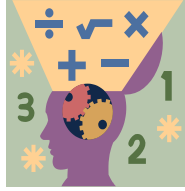


Name: _____ Section: _____



Homework

We will continue Chapter 3 this week, *Addition and Subtraction Strategies*. Please complete homework daily based on the schedule provided below. **Please do not work ahead on homework assignments.** Failure to complete homework or bring packet to class will result in points deducted.

Reminders

Please have your child use Reflex Math to master and reinforce their fact fluency. The 3rd Grade curriculum depends on a strong foundation in multiplication and division facts.

Reflex Math and IXL login cards are inside the red folders.

Extra Practice

Additional practice for the daily lesson is available on HMH. Scholars can also review daily lesson on Archimedean Cinemath.

Notes

Homework should be completed by **Sunday, September 17th**. Please feel free to contact me with any questions or concerns at diana.charaf@archimedean.org.

Monday September 11th – IXL lessons D1 and D2

Tuesday September 12th – IXL lessons D3 and G2

Wednesday September 13th – IXL lessons G3 and G4

Thursday September 14th – IXL lessons E1 and E2

Friday September 15th – IXL lessons E3 and F1

<u>Monday</u> September 11 th	<u>Tuesday</u> September 12 th	<u>Wednesday</u> September 13 th	<u>Thursday</u> September 14 th	<u>Friday</u> September 15 th