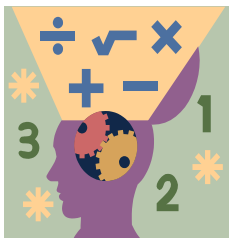


Name: \_\_\_\_\_ Section: \_\_\_\_\_



### Homework

Hello Scholars and Parents. We will begin Chapter 1 this week focusing on understanding multiplication and division of whole numbers. Scholars will understand how to multiply multi-digit numbers, represent division with 2-digit divisors, partial quotients, and how to estimate with 2-digit divisors. Students will complete the **Chapter 1 Assessment on Friday September 1, 2023**.

Students will receive their login credentials to HMH this week. Through the platform, they have access to the interactive lessons and videos to support instruction. Please encourage your child to complete the additional resources to reinforce understanding. If you have any questions or concerns, please feel free to contact me at [vasily.tserekh@archimedean.org](mailto:vasily.tserekh@archimedean.org).

### Notes

Students **MUST** prove and show all their work. If additional space is needed, please feel free to attach lined paper to the homework packet. **Failure to show your work will result in a lower grade.** Please complete the homework to the best of your abilities.

<u>Monday</u>	August 28 <sup>th</sup>	– Lesson 1.1
<u>Tuesday</u>	August 29 <sup>th</sup>	– Lesson 1.2
<u>Wednesday</u>	August 30 <sup>th</sup>	– Lesson 1.3
<u>Thursday</u>	August 31 <sup>st</sup>	– Lesson 1.4
<u>Friday</u>	September 1 <sup>st</sup>	– No Homework

Parents please initial below each day acknowledging your child has completed the assigned homework. **Homework will be checked daily in class. Completed homework packets are due on Friday September 1, 2023 for a grade.**

<u>Monday</u> August 28th	<u>Tuesday</u> August 29th	<u>Wednesday</u> August 30th	<u>Thursday</u> August 31st	<u>Friday</u> September 1st

Name \_\_\_\_\_

LESSON 1.1  
Practice and Homework

# Multiply by Multi-Digit Numbers

Go Online

Interactive Examples

Estimate. Then find the product using the method of your choice.

23. Estimate: 4,000

$$\begin{array}{r} 82 \\ \times 49 \\ \hline 738 \\ + 3,280 \\ \hline 4,018 \end{array}$$

24. Estimate: \_\_\_\_\_

$$\begin{array}{r} 8,792 \\ \times 68 \\ \hline \end{array}$$

25. Estimate: \_\_\_\_\_

$$\begin{array}{r} 1,537 \\ \times 242 \\ \hline \end{array}$$

26.  $523 \times 267$

27.  $15,309 \times 29$

28.  $612 \times 87$

\_\_\_\_\_

\_\_\_\_\_

\_\_\_\_\_

## Problem Solving



29. A company shipped 48 boxes of canned dog food. Each box contains 24 cans. How many cans of dog food did the company ship in all?

\_\_\_\_\_

30. There were 135 cars in a rally. Each driver paid a \$25 fee to participate in the rally. How much money did the drivers pay in all?

\_\_\_\_\_

31. **WRITE** *Math* Write a problem multiplying a 3-digit number by a 2-digit number. Show all the steps to solve it by using place value and regrouping and by using partial products.

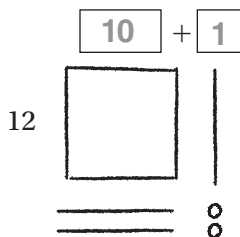
# Represent Division with 2-Digit Divisors

Go Online

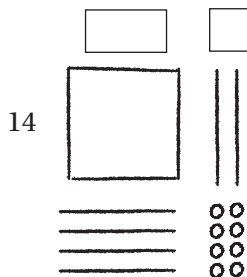
Interactive Examples

Use the quick picture to divide.

15.  $132 \div 12 = \overline{11}$



16.  $168 \div 14 = \underline{\hspace{2cm}}$



Divide. Draw a quick picture.

17.  $192 \div 16 = \underline{\hspace{2cm}}$


18.  $169 \div 13 = \underline{\hspace{2cm}}$

## Problem Solving

19. There are 182 seats in a theater. The seats are evenly divided into 13 rows. How many seats are in each row?
20. There are 156 students at summer camp. The camp has 13 cabins. An equal number of students sleep in each cabin. How many students sleep in each cabin?

\_\_\_\_\_

\_\_\_\_\_

21.  **WRITE** *Math* Write a division problem that has a 3-digit dividend and a divisor between 10 and 20. Show how to solve it by drawing a quick picture.

\_\_\_\_\_

\_\_\_\_\_

# Partial Quotients

Go Online

Interactive Examples

Divide. Use partial quotients. Write the remainder as a fraction.

25.  $18 \overline{)236}$

$18 \overline{)236}$		
$\underline{-180}$	$\leftarrow 10 \times 18$	10
56		
$\underline{-36}$	$\leftarrow 2 \times 18$	2
20		
$\underline{-18}$	$\leftarrow 1 \times 18$	+ 1
2		13

26.  $36 \overline{)540}$

27.  $27 \overline{)624}$

$236 \div 18$  is  $13\frac{2}{18}$ .

28.  $9,514 \div 28$

29.  $322 \div 14$

30.  $62,715 \div 25$


## Problem Solving

31. A factory processes 1,560 ounces of olive oil per hour. The oil is packaged into 24-ounce bottles. How many bottles does the factory fill in one hour?

\_\_\_\_\_

32. A pond at a hotel holds 14,274 gallons of water. The groundskeeper drains the pond at a rate of 78 gallons of water per hour. How long will it take to drain the pond?

\_\_\_\_\_

33.  **WRITE** *Math* Explain how using partial quotients to divide is similar to using the Distributive Property to multiply.

\_\_\_\_\_

\_\_\_\_\_

\_\_\_\_\_

# Estimate with 2-Digit Divisors

Go Online

Interactive Examples

Use compatible numbers to find two estimates.

21.  $18 \overline{)1,322}$

22.  $12 \overline{)478}$

23.  $33,671 \div 12$

24.  $2,242 \div 33$

$1,200 \div 20 = 60$

$1,400 \div 20 = 70$

Use compatible numbers to estimate the quotient.

25.  $82 \overline{)5,514}$

26.  $61 \overline{)5,320}$

27.  $28 \overline{)776}$

28.  $23 \overline{)16,259}$

## Problem Solving

29. A cubic yard of topsoil weighs 4,128 pounds. About how many 50-pound bags of topsoil can you fill with one cubic yard of topsoil?

\_\_\_\_\_

30. An electronics store places an order for 2,665 USB flash drives. One shipping box holds 36 flash drives. About how many boxes will it take to hold all the flash drives?

\_\_\_\_\_

31.  **WRITE** *Math* Create a division problem with a 2-digit divisor.

Using more than 1 set of compatible numbers, observe what happens when you estimate using a different divisor, a different dividend, and when both are different. Using a calculator, compare the estimates to the answer and describe the differences.

---

---

---

---

---

---

---

---