

# Open House Third Grade ELA

Ms. Sotomayor



# Meet the Teachers



## Mrs. Sotomayor

12 Years Teaching Experience  
Bachelors in Elementary Education  
Animal Lover



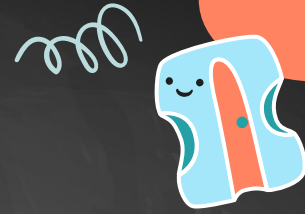
## Mrs. Bulnes

10 Years Teaching Experience  
Masters in Reading Education  
Food Lover



# Behavior Expectations

1. Be respectful of others.
2. Follow directions the first time they are given.
3. Raise your hand to share your thoughts.
4. Be prepared and ready to learn.
5. Keep your hands, feet, and other objects to yourself.

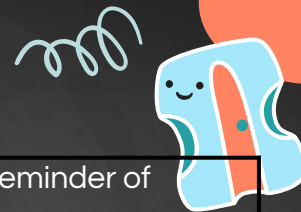


ee



Wm

# Behavior Management Plan



Warning 1: Verbal Warning	Scholar will receive a verbal warning and reminder of expected behavior.
Warning 2: Loose a Dojo point	Scholar will lose a Dojo point related to the expected behavior
Warning 3: Written Communication	Scholar will lose a second Dojo point and teacher will send a message via email/agenda to the child's parents.
Warning 4: Loss of Privilege	Continued interruption will result in a loss of privilege (no recess, independent work in another classroom, seat change, etc.) and teacher will follow up with the parent through email or phone contact.
Warning 5: Parent/Teacher Conference	If behavior persists, a parent conference with the third grade teaching team will be requested and/or silent lunch detention will take place.
Warning 6: Administrative Referral	If behavior is not corrected, scholar will be referred to the Student Support Team including parent contact and written referral form completed prior to being sent to counselor, ESE program specialist if appropriate and/or administration.



ee

Wm



Please be sure to review Weekly  
Newsletter for homework and  
updates.

- For the Third Grade ELA Newsletter and homework, go to the "Homework" tab on the Archie Main page.
- For a quick view of all classes, see the Third Grade Newsletter found on the Archie Main Page under the "Newsletter" tab.



# Homework



Home Learning is graded based on completion with fidelity. Completed assignments that reflect a lack of care in their work, short response questions not answered incomplete sentences, or answers not proven with underlined text evidence, etc., will result in no credit for that assignment.

# Homework



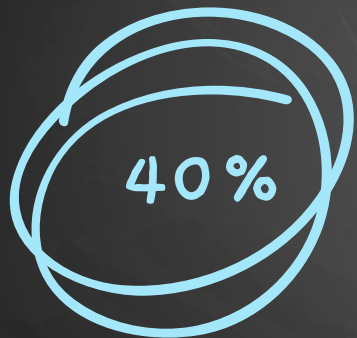
Homework will be posted to Archie before noon at the start of the week and is due on Fridays. Should your child have an unusual circumstance that prevented them from completing an assignment, please communicate with us via a handwritten note or email to determine an appropriate solution.

If students earn above a 90% on the spelling pretest, they are exempt from all spelling practices assigned for homework.

Please note that late assignments result in a 5% deduction per day until submitted.

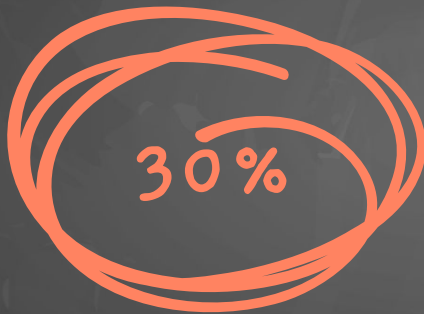
# Grading Scales

Reading, Language Arts, Social Studies



**Tests**

Cold Reads



**Quizzes**

Guided Reading



**Classwork**

Independent  
Assignments



**Homework**

Completion with Fidelity





# Grade Level Expectations



## LEARN ABOUT THE THIRD GRADE STANDARDS

### YOUR CHILD WILL EXPLORE THE WORLD THROUGH TEXT BY:

- Decoding multisyllabic words and words with suffixes such as -ful, -less and -est.
- Fluently read grade-level texts.
- Writing all upper and lowercase letters in cursive.
- Writing narrative, opinion and expository texts that follow rules of standard English grammar, punctuation, capitalization and spelling.
- Using grade-appropriate vocabulary in both speaking and writing.

### IN READING AND WRITING, YOUR CHILD WILL BE ABLE TO:

- Summarize a text.
- Discuss how characters grow and change across a text.
- Explain how text features contribute to the overall meaning of the text.
- Identify the central idea and the relevant details within a text.
- Figure out the meaning of unknown words using context clues, figurative language, word relationships, reference materials and/or background knowledge.
- Compare and contrast how two authors present information on the same topic.
- Conduct research to answer a question, organizing information about the topic from multiple sources.



# Subject Areas



## Reading

- Comprehension
- Vocabulary
- iReady

## Language Arts

- Grammar
- Writing Workshop
- Written Responses

## Social Studies

- Comprehension
- Content Based Material
- Projects



## Types of Assignments:

- iReady
- Cold Read Tests
- Selection Quizzes
- Novel Studies
- Social Studies Weekly
- Group Projects
- Spelling / Grammar Quiz



# HMH Into Reading

What you find:

- Weekly Stories
- Anchor Charts
- Practice of Skills

How to log in:

1. Visit this site:  
<https://www.hmhco.com/ui/login/>
2. Select "Archimedean Schools" as the district.
3. Use Archie username
4. Password is Archie199@

The image shows a smartphone screen with a login form titled "Sign in". The form contains the following fields:

- Country \***: A dropdown menu with "United States" selected.
- State \***: A dropdown menu with "Florida" selected.
- District/Independent School \***: A dropdown menu with "Archimedean Schools" selected.
- Username \***: A text input field containing "ivana.morales".
- Password \***: A text input field with masked characters "\*\*\*\*\*".

Below the password field, there is a note: "Required fields are marked with an asterisk (\*)". To the right of this note is a link that says "Forgot password?". At the bottom right of the form is a blue button labeled "Sign in".

# Social Studies Florida Standards

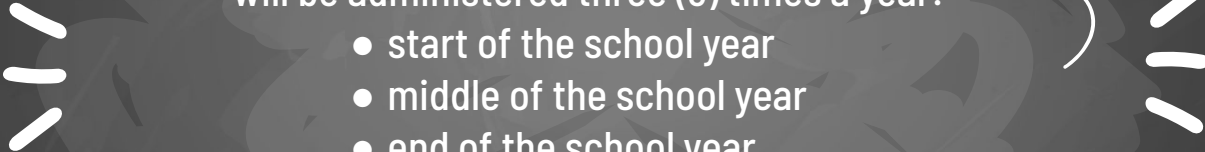
Third grade social studies involves the study of geography, history, economics, and civics.

- Understanding and using maps
- U.S. regions and colonial life
- Gaining an understanding of economic concepts (banks, development of money, production of goods).
- The events that led to the birth of our nation.






# State Testing



The F.A.S.T. (Florida Assessment of Student Thinking)  
will be administered three (3) times a year:

- start of the school year
- middle of the school year
- end of the school year

More information can be found on the Florida Department of Education website:  
<https://www.fldoe.org/accountability/assessments/k-12-student-assessment/best/>





# Dadeschools.net - Student Access



You can log in following the steps below:

1. Visit: <http://www.dadeschools.net/students.asp>

2. USERNAME: your child's student id #

Please email us if you do not know your child's id #

3. PASSWORD: your initial password is your child's two-digit birth month, two digit birthday, two digit birth year, followed by the first initial of your child's first name and last name (ex: mmddyy\*\*)

Parent portal access (parent pin) can be requested in the main office or by emailing: [ruth.bouliakis@archimedean.org](mailto:ruth.bouliakis@archimedean.org)



# Hopes and Dreams

On the paper planes in front of you, please write your hopes and dreams you have for your third grader for their reading and language arts class this year.





We appreciate your cooperation  
and support in making this a  
fantastic and effective school year!



Do you have any questions?

Mrs. Bulnes:

[ivana.morales@archimedean.org](mailto:ivana.morales@archimedean.org)

Ms. Sotomayor:

[michelle.sotomayor@archimedean.org](mailto:michelle.sotomayor@archimedean.org)

IT Support:

[support@archimedean.org](mailto:support@archimedean.org)

Thanks!

