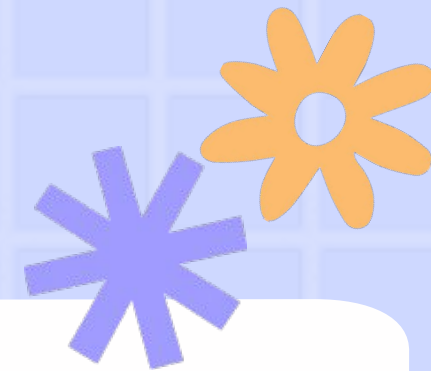
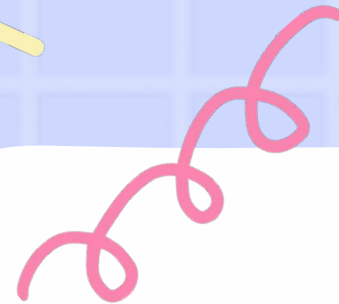
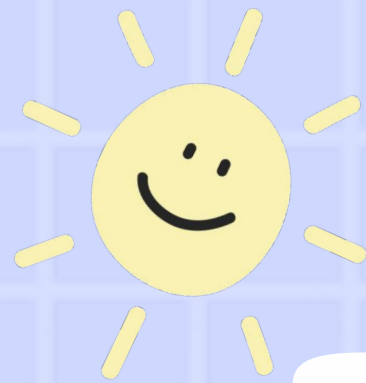
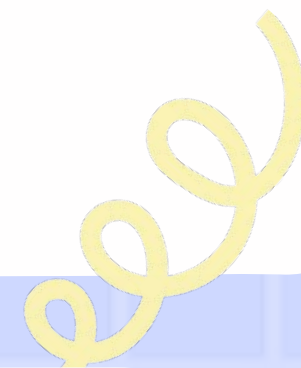
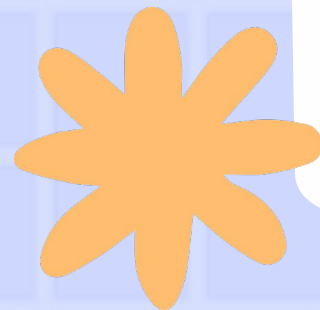


# Open House!

## Am. Math



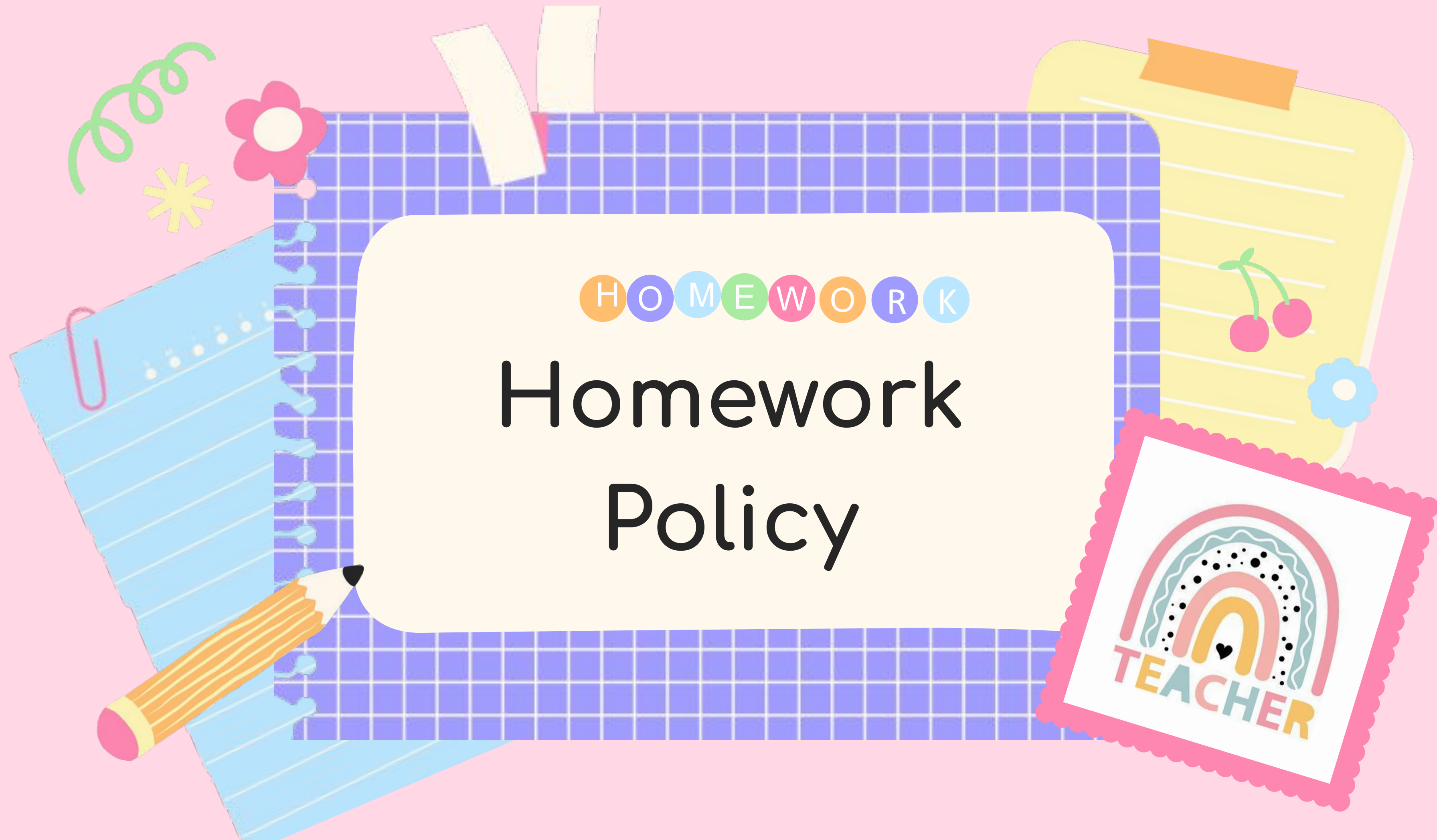
Archimedean Academy  
Kindergarten  
2022-2023



Ms. Silvestros

H O M E W O R K

# Homework Policy





# American Math - Ms. Silvestros

## Homework

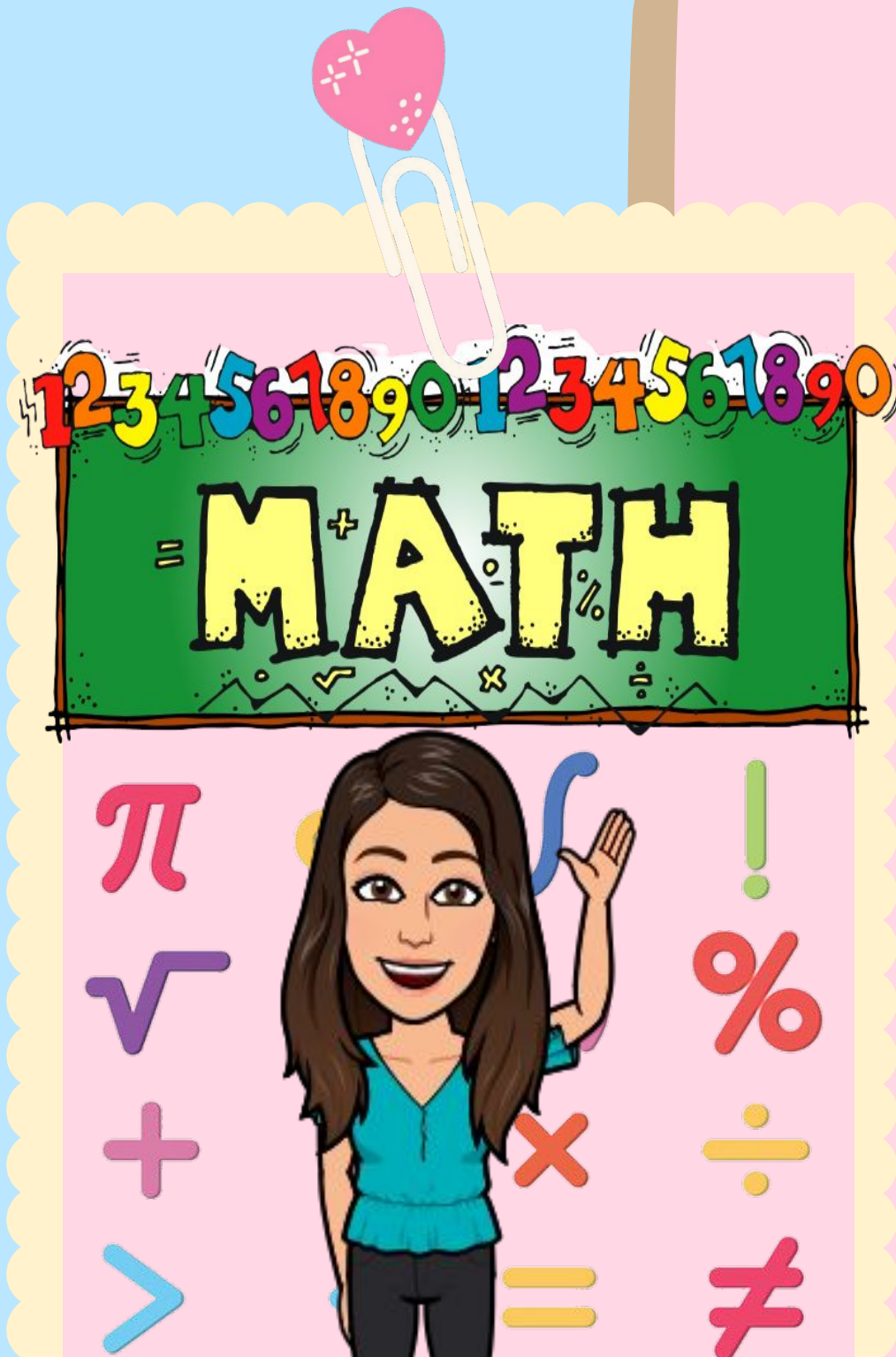
- American Math HW will be posted on Mondays and due on Friday.
- No HW on Fridays /due date..

\*Subject to change on weeks with holidays/ teacher Planning days.

Each day late will receive an incremental late grade. After 1 week late, it is a 0% (Z).

## Supplies

- Am Math folder:  
**green**
- pencil pouch
- with supplies (sharpened pencils, erasers, crayons.





# Archie

## Homework

- Archie url:  
[sis.archimedean.org](https://sis.archimedean.org)  
-Navigate to: "Homework"-  
"Elementary"  
-Select student's Class section
- If there is a problem printing homework, please contact me **before** the HW is due. If your child is in ACC please contact  
[acchomework@archimedean.org](mailto:acchomework@archimedean.org)  
**before** HW is due

## Communications

- Emails are the best way to communicate.
- Please make sure I have your most up to date email address.
- Include: Student first and last name and class section.
- Please allow 24 hrs. for a response.
- Strategist will upload Weekly Newsletter on Archie with class information and reminders.

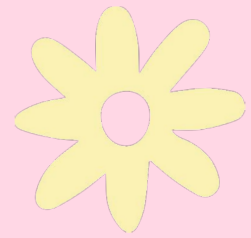




The background is a light pink color. In the center is a large, cream-colored rounded rectangle with the text 'Grading Policy'. Above the text is a small 'G<sup>R</sup>' logo. To the left of the central rectangle is a blue spiral-bound notebook with a pink paperclip and a yellow pencil with a pink eraser. To the right is a yellow clipboard with a pink cherry sticker and a blue flower sticker. Above the central rectangle are two yellow sticky notes. In the top left corner are green curly lines, a pink flower, and a yellow star. In the bottom right corner is a white card with a pink scalloped border, featuring a rainbow and the word 'TEACHER'.

# G<sup>R</sup> Grading Policy



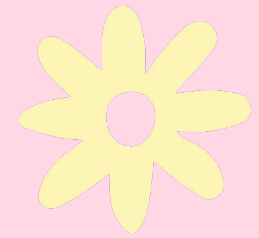


## Grade Categories/Weights:

Classwork: 40%  
Homework: 15%  
Tests: 25%  
Quizzes/Projects: 20%

## Grade Scales:

E= Excellent: 3.5-4.0  
G= Good: 2.5-3.0  
S= Satisfactory: 1.5-2.0  
M= Minimal: 1  
U= Unsatisfactory: 0  
Z= Zero: 0



## Important Grading Policies:

- Unexcused absences/ tardies will receive a "Z" (zero) for missed classwork/tests. Excused absences will be marked "X" (excused), or if time-permitting will do make-up classwork/test for full grade earned.
- Unexcused late HW will receive an incrementally lowered grade for each day late. After 1 week it is a "Z".



# Thank you for your time!



Ms. Silvestros  
[michella.silvestros@archimedean.org](mailto:michella.silvestros@archimedean.org)