

Welcome to 5th Grade!

Open House ~~~~~
September 14, 2022





5th Grade Teaching Team

- Ms. Bolivar - Reading, Language Arts & SS, Grade Strategist
 - natalie.bolivar@archimedean.org
- Ms. Regan - Reading, Language Arts & Social Studies
 - leilani.regan@archimedean.org
- Mr. Carbia - Philosophy
 - jose.carbia@archimedean.org
- Mrs. Hernandez - Science
 - laura.hernandez@archimedean.org
- Mrs. Pappa - Greek Language
 - maria.pappa@archimedean.org
- Mrs. Zhang - American Math
 - mei.zhang@archimedean.org
- Dr. Boukas - Greek Math
 - lambros.boukas@archimedean.org

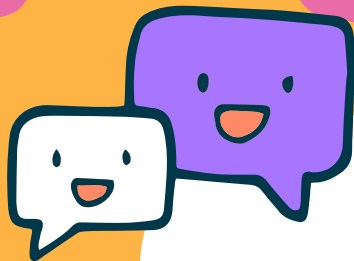




Specials Team and Administrative Report

- Ms. Rocky - Art
 - raquel.fernandez@archimedean.org
- Mrs. Marquez - Music
 - nimia.marquez@archimedean.org
- Coach Schimer - PE
 - jason.schimer@archimedean.org
- Monica Rodriguez - ESE Specialist
 - monica.rodriguez@archimedean.org
- Ms. Rebecca - School Counselor
 - rebecca.abreu@archimedean.org
- Ms. Maria - Assistant Principal
 - morales.zervos@archimedean.org
- Dr. Martínez - Principal
 - Jose.martinez@archimedean.org





"GROWTH."
Our motto this year.
We can do anything!

#ArchieStrong!



Specials Rotation for 5th Grade



**Physical
Education**



Music



Art



**Greek
Movement**



Rotations will take place every week!

EXPECTATIONS



Be Respectful

- Raise hands and wait your turn to speak
- Allow others to learn by not disrupting or disturbing the class
- Use kind words and manners in all interactions
- Keep hands and feet to yourself to respect others' personal space

Be Responsible

- Give your best effort
- Listen and follow directions, quickly and the first time
- Be prepared to learn (materials, behavior, attitude)
- Stay on task
- Keep iPads flat on the desk
- Be attentive to classmates speaking

Be Safe

- Walk safely throughout the halls
- I.D. must be worn at all times
- Stay in the lunch area/classroom/school and stay with your group
- See something, say something

Be Resourceful

- Ask yourself if you've thought of every solution prior to asking for help
- Create useful and unique solutions in challenging situations

Be Curious

- Embrace differences
- Be willing to learn new things
- Find new and educational ways to spend your free time
- Lead by example and help others as 5th graders are role models for the school

Progressive Disciplinary Procedures

BEHAVIOR



Tier 1 - Verbal Warning	Scholar will be advised that behavior is not acceptable for the classroom environment
Tier 2 - Escalated Verbal Warning/Private Discussion	Scholar will be taken aside to be reminded that the continued behavior is unacceptable
Tier 3 - Written Communication	Teacher will send a message via email/agenda to the child's parents and determine whether the scholar should be referred to the school counselor
Tier 4 - Loss of Privilege	Continued interruption will result in a loss of privilege (e.g. no recess, seat change, redirection, independent work in another classroom, etc.) and the teacher will follow up with the parent through email or phone contact
Tier 5 - Parent Conference Request/ Lunch Detention	If behavior persists, an in-person parent conference with the 5th grade teaching team will be requested and/or lunch detention will be administered by Mr. Carbia
Tier 6 - Follow up Contact/ Loss of Major Privilege	If the aforementioned actions do not correct the behavior, parent contact will be re-initiated with loss of major 5th grade activity (e.g. field trip, banquet, or club activity, etc.)
Tier 7 - Administrative Referral	Scholar will be referred to administration for further disciplinary action

Brain Boost



Greek LA class posts **each Sunday evening a HW packet on Archie** and includes any learning or weekly classwork and homework information that scholars need to be aware of at the cover sheet of the Reading ELA Brain Boost



5th Grade Reading ELA Brain Boost

NAME: _____

Week 4 Home Learning/Daily Assignments for 5ABCDE

Monday, September 4th (No School - Happy Labor Day!)

- ☐ No Homework

Tuesday, September 5th

- ☐ Continuation of HMH Module 1-1 Notes. Review notes at home

Wednesday, September 6th

- ☐ Complete Social Studies Weekly Week 1 Newspaper
- ☐ Review HMH Module 1-1 Notes

Thursday, September 7th

- ☐ Review Module 1-1 skills notes and Weekly Language Review practice for tests tomorrow

Friday, September 8th

- ☐ Cold Read Test Module 1-1 & Weekly Language Review Quiz today

ASSESSMENT ANNOUNCEMENTS

- Cold Read Reading Comprehension Test on Module 1-1 on Fri 9/8
- Weekly Language Review Quiz on Fri 9/8

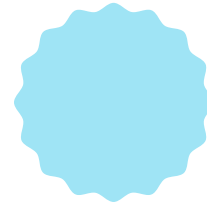
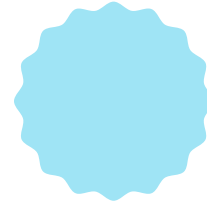
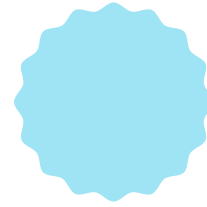
IMPORTANT UPCOMING DATES

✓ Mon	9/05	Labor Day - Holiday! No School!
✓ Wed	9/14	Open House 6 pm - 8 pm
✓ Mon	9/26	Teacher Planning Day
✓ Wed	10/05	Teacher Planning Day
✓ Fri	10/21	End of 1st Grading Period

Types of Assignments

ABC

Here are examples of assignments your child may have throughout the school year in Greek Language.



- Seesaw assignments
- Quizlet practice
- Note taking journal
- Classwork activities role plays and recordings
- Cold read tests
- Selection quizzes spelling, grammar and Greek vocabulary
- Greek Mythology stories and crafts
- Writing letters/essays
- Ellinomatheia test preparation





Greek language Homework

Our Greek Language Homework mainly consists of worksheets reviewing classwork and preparing for a quiz/test or a jointed classwork/HW packet from the main learning tool for all grades in Archimedean Schools for Greek LA, KLIK. With your supervision some youtube videos will be assigned to be watched for listening comprehension and practicing Greek songs.

Home Learning is usually graded based on completion with fidelity. Completed assignments that reflect a lack of care in their work, short response questions not answered in complete sentences or use of english language instead of Greek will result in no credit for that assignment.

Scholars are expected to have their completed assignments (in paper or in good notes daily so that we may review it in class. Should your child have an unusual circumstance that prevented them from completing an assignment, please communicate with us via a handwritten note or email so that we can determine an appropriate solution. Please note that late assignments result in a 10% deduction per day until submitted.

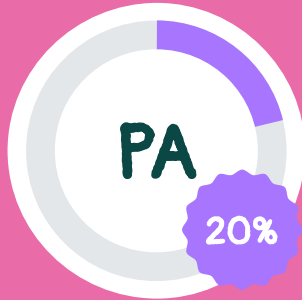


GRADING SCALES

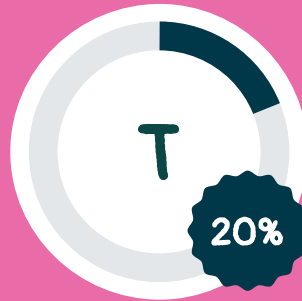
GREEK LANGUAGE



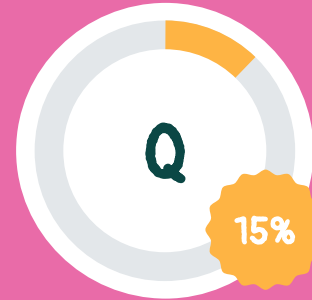
CLASSWORK



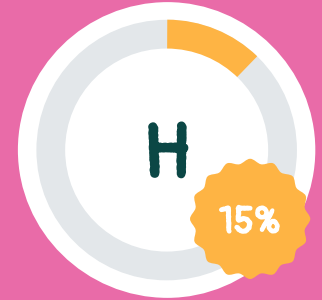
PARTICIPATION



TESTS



QUIZZES



HOMEWORK



GOALS and OBJECTIVES

Participation, Classwork, and Ellinomatheia



Participation

- Comprehension
- Follow Orders
- Questions/Effort
- Common phrases

Classwork



- Grammar
- Essays
- Written responses
- Correct answers

Ellinomatheia



- Reading Comprehension
- Listening Comprehension
- Mock-Up Tests





Technology





Dadeschools.net - Student Access

- Your child's grades are posted on the Dadeschools portal. You can log in following the steps below:
- 1. Visit: <http://www.dadeschools.net/students.asp>
- 2. **USERNAME:** your child's student id #
Please email us if you do not know your child's id #
- 3. **PASSWORD:** your initial password is your child's two-digit birth month, two digit birthday, two digit birth year, followed by the first initial of your child's first name and last name (ex: mmddyy**)
- Parent portal access (parent pin) can be requested in the main office or emailing: ruth.bouliakis@archimedean.org

The screenshot shows the login interface for Dadeschools.net. It features a dark blue background with white text. At the top, the website name 'Dadeschools.net' is displayed. Below it are two input fields: the first is labeled 'Username' and the second is masked with dots. A checkbox labeled 'Remember Username' is positioned between the fields. A prominent blue 'Login' button is located below the password field. At the bottom, there are links for 'Forgot Username/Password?' and 'Create an Account', followed by a 'Badge Login' option with a small downward arrow.

ABC



New Archimedean Family Members

- 5th Grade starts daily at 8:00 am and ends at 3:30 pm. (Except for Fridays!)
- Early dismissal at AA differs from MDCPS! We dismiss early on Fridays at 2:30 pm!
- Contact support@archimedean.org to request a username and password for student access to Archie.
- All HW and newsletters are posted on sis.archimedean.org.
- Uniforms can be purchased through www.archimedean.org. Our scholars are expected to wear the school embroidered white or navy blue polo with khaki bottoms.
- To join the PTO or learn more, please email PTOArchimedean@gmail.com.
- The school's administrative support contact is Ms. Cynthia Paraskos. Please contact her at cynthia.paraskos@archimedean.org if you have any attendance questions, updates to emergency contact information or general school inquiries.



ABC



Dismissal





5th Grade Dismissal

- 5th grade students dismiss at 3:30 pm (half an hour after the lower grades) Monday - Thursday, and Fridays at 2:30 pm.
- Siblings of 5th Graders can receive courtesy sibling care from 3:00-3:30 pm (or 2:00- 2:30 pm on Fridays) so that they dismiss with their older sibling. Please notify us if your child will be participating in 5th Grade Sibling Care.
- At dismissal, please have a car tag visibly displayed from your vehicle. We are trying to efficiently dismiss and this expedites the process immensely. Often the glare from the sun prevents us from seeing who is in the vehicle and we do not recognize the vehicles. Also, a car tag allows us to know that you are part of the Archie family.
- Please be sure to drive all the way around the roundabout as it speeds up dismissal by not interrupting traffic. Students will be sent walking to the designated pickup spot.

ABC



**Covid-19 guideline
questions are to be
directed to
administration**





**Thank you for
your partnership!**

We appreciate your cooperation and
support in making this a fantastic and
effective school year!

