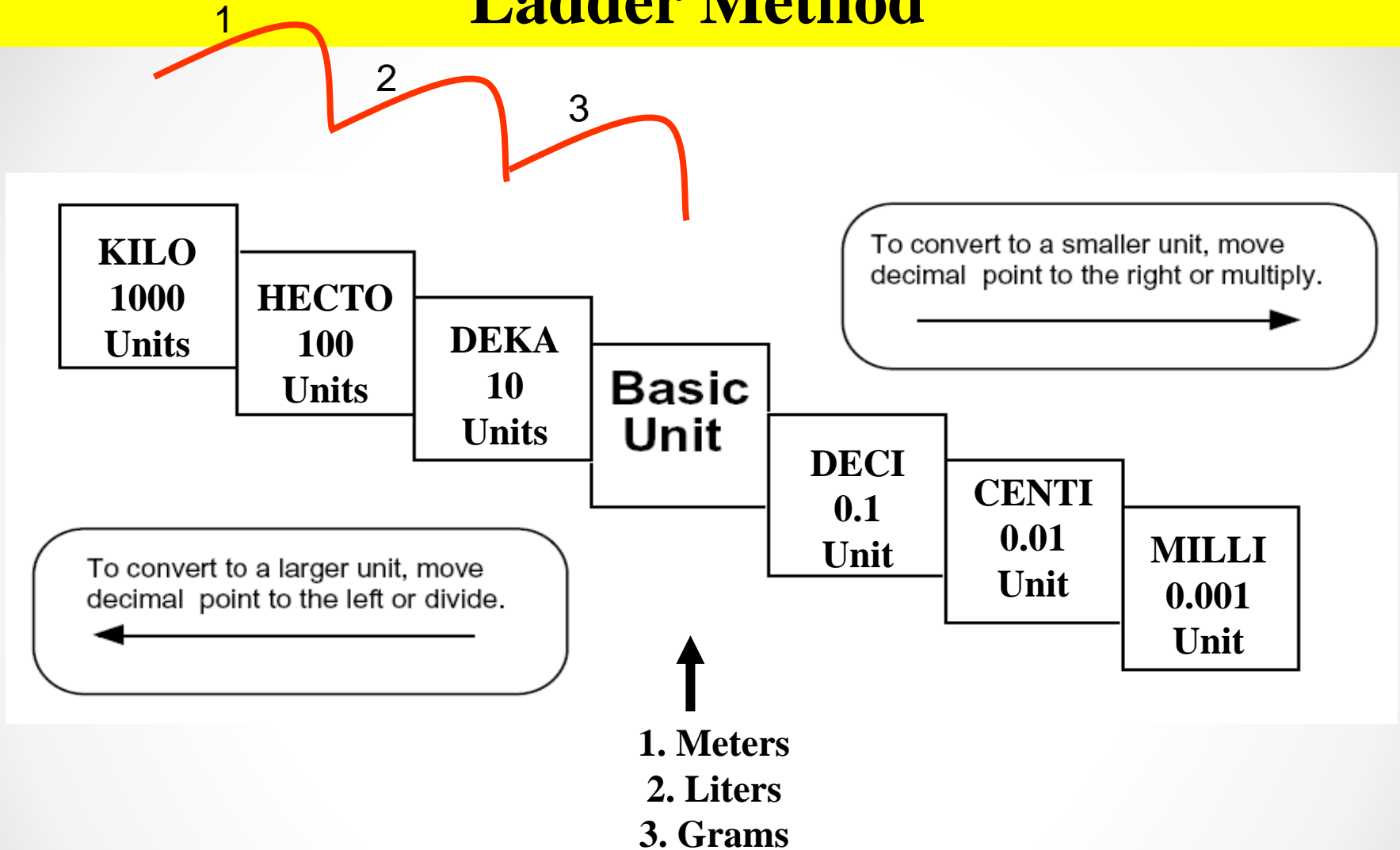


# Metric Mania



Metric Conversions  
Ladder Method

# Ladder Method



# Ladder Method

King Henry Died \*\* Drinking Chocolate Milk

## How do you use the “ladder” method?

- 1<sup>st</sup> – Determine your starting point.
- 2<sup>nd</sup> – Count the “jumps” to your ending point.
- 3<sup>rd</sup> – Move the decimal the same number of jumps in the same direction.

4 km = \_\_\_\_\_ m



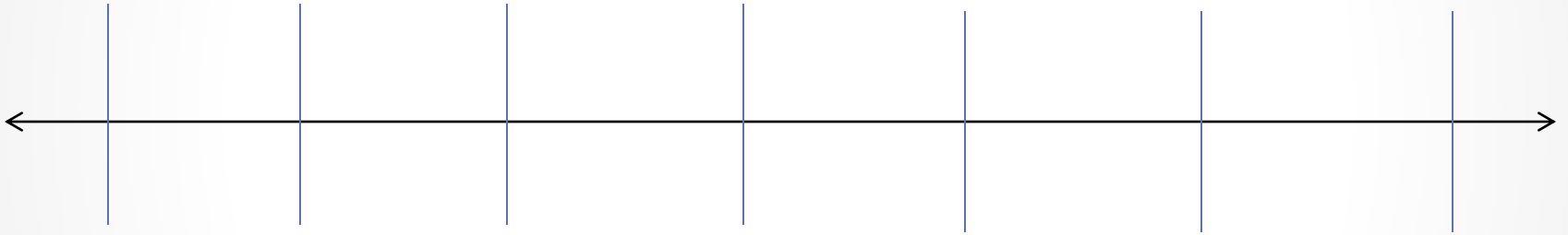
Start



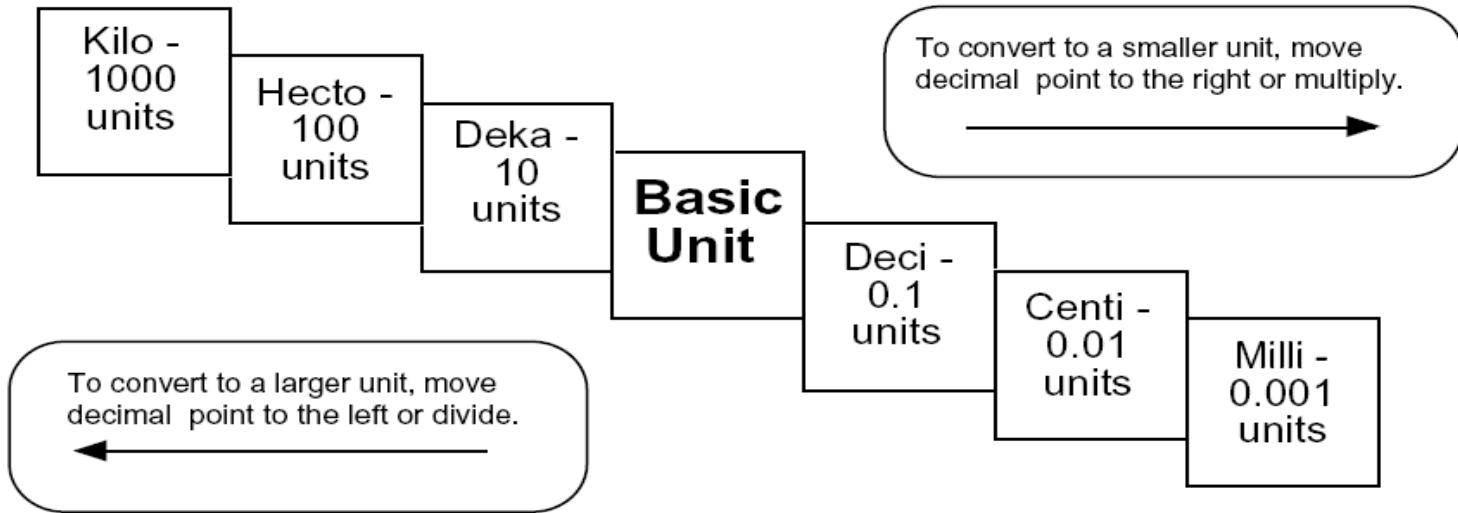
End

How many jumps does it take?

# Abbreviations:



# Conversion Practice



**Try these conversions using the ladder method.**

$1000 \text{ mg} = \underline{\hspace{2cm}} \text{ g}$

$1 \text{ L} = \underline{\hspace{2cm}} \text{ mL}$

$160 \text{ cm} = \underline{\hspace{2cm}} \text{ mm}$

$14 \text{ km} = \underline{\hspace{2cm}} \text{ m}$

$109 \text{ g} = \underline{\hspace{2cm}} \text{ kg}$

$250 \text{ m} = \underline{\hspace{2cm}} \text{ km}$

**Compare using  $<$ ,  $>$ , or  $=$ .**

$56 \text{ cm} \bigcirc 6 \text{ m}$

$7 \text{ g} \bigcirc 698 \text{ mg}$