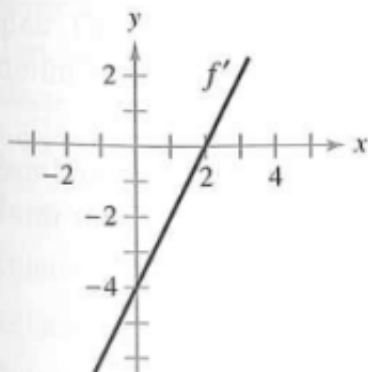


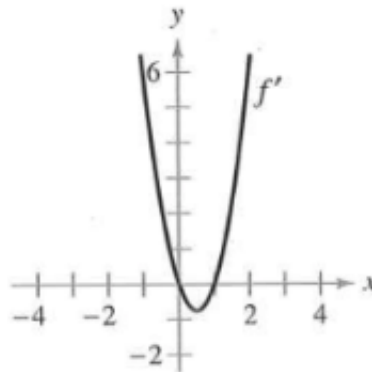
The deadline for all homework assignments is the one specified in Archie before 11:59 pm. As discussed in class, It must be correctly uploaded in order to be graded. Show all your work and justifications.

In Exercises 65–68, use the graph of f' to (a) identify the interval(s) on which f is increasing or decreasing, and (b) estimate the value(s) of x at which f has a relative maximum or minimum.

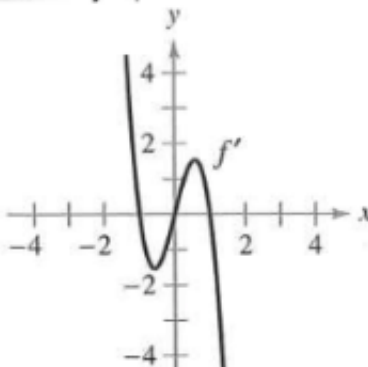
65.



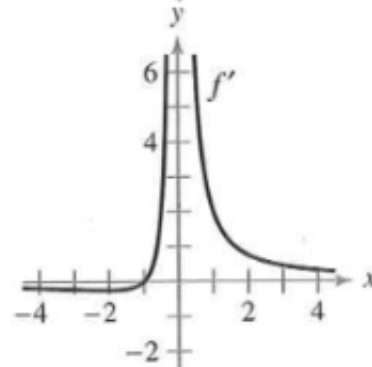
66.



67.

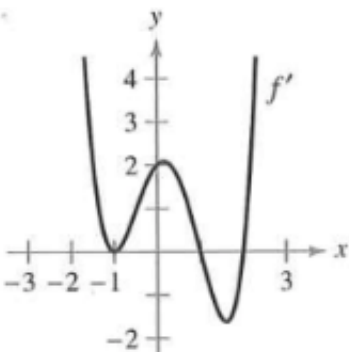


68.



In Exercises 69 and 70, use the graph of f' to (a) identify the critical numbers of f , and (b) determine whether f has a relative maximum, a relative minimum, or neither at each critical number.

69.



70.

